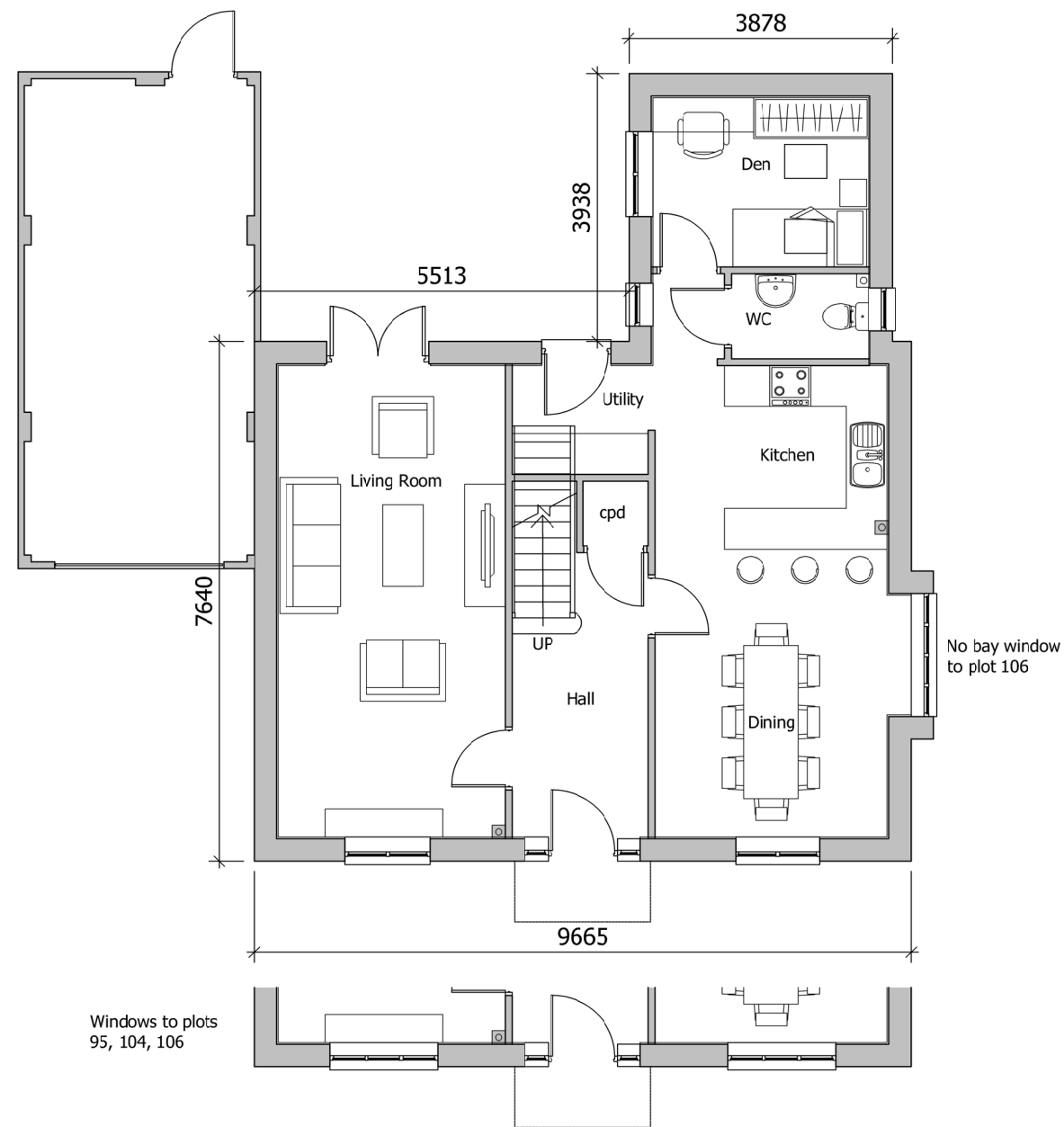
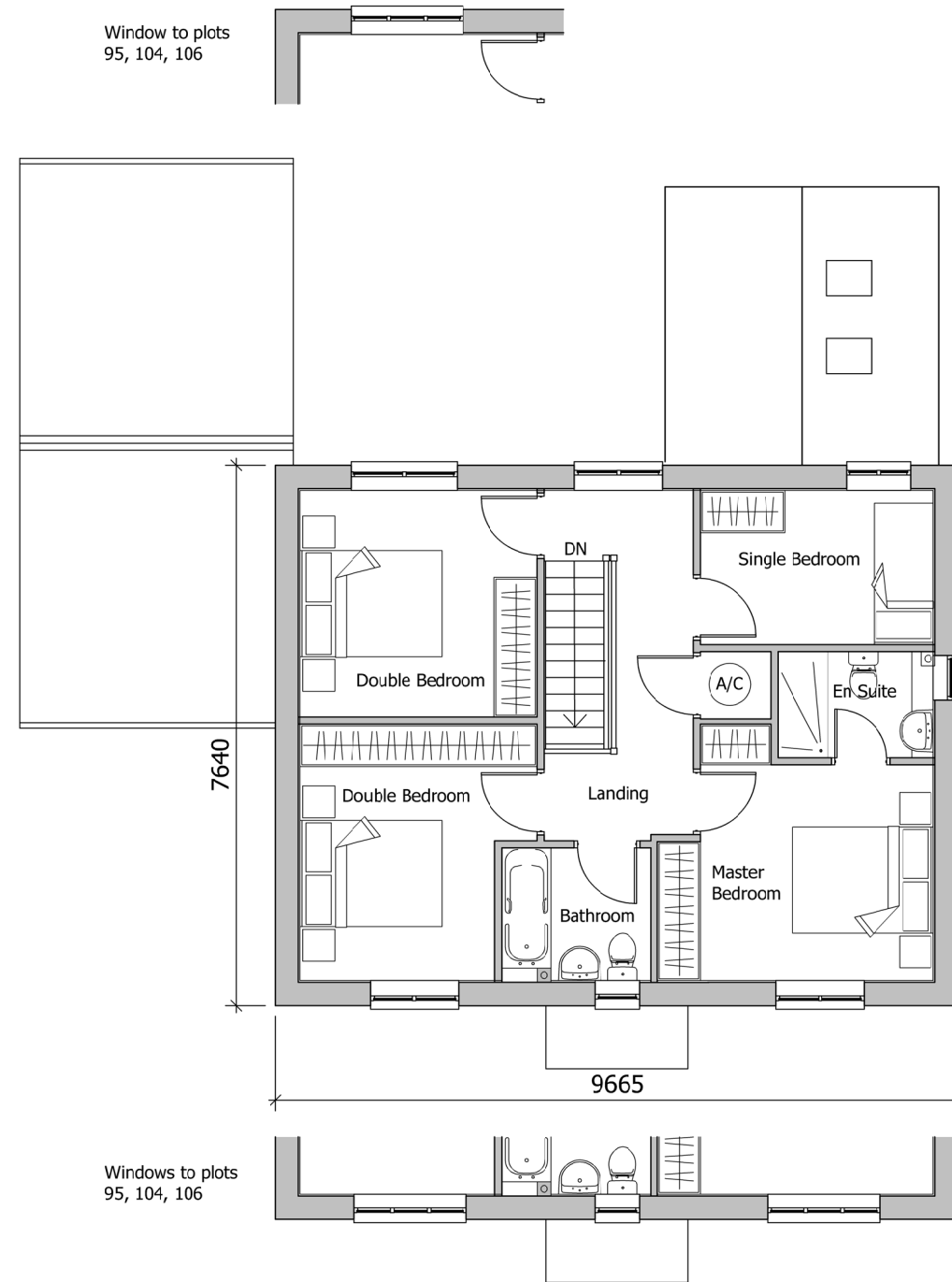


The scaling of this drawing cannot be assured

Revision	Date	Drn	Ckd
-	30.08.19	EM	CB
P1	28.02.20	ROR	ST
Revisions undertaken to LPA consultation responses and feedback			
P2	15.04.21	PL	ROR
Plot numbers changed to revised layout			



AS
GROUND FLOOR PLAN



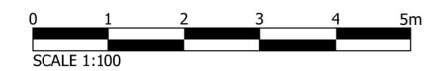
FIRST FLOOR PLAN

PLOT NUMBERS:
AS: 4, 40
OPP: 95, 104, 106

REFER TO SITE LAYOUT MATERIAL PLAN
A-P10-017 FOR INDIVIDUAL PLOT MATERIALS

PARKING	
ON PLOT DRIVEWAY	1
GARAGE/CAR PORT	1

GENERAL PRINCIPLE PARKING PROVISION
REFER TO SITE LAYOUT HOUSING MIX
A-P10-015 FOR INDIVIDUAL PLOT SITUATIONS



PLANNING

Project
**LAND AT TEVERSHAM ROAD
FULBOURN**

Drawing Title
**HOUSE TYPE G
FLOOR PLANS**

Date: 15.07.19
Scale: 1:100@A3
Drawn by: WL
Check by: ST

Project No: 28815
Drawing No: 28815-P11-70
Revision: P2

Note: Window positions and sizes may vary slightly dependent on house type character area location (internal layout is constant). This floor plan reflects the Village Lane character area variant. Please refer to general arrangement elevation drawings (P-13 series) for each character area.

**BARTON
WILLMORE**

Town Planning • Master Planning & Urban Design • Architecture •
Landscape Planning & Design • Infrastructure & Environmental Planning •
Heritage • Graphic Communication •
Communications & Engagement • Development Economics

bartonwillmore.co.uk



Offices at Birmingham Bristol Cambridge Cardiff Ebbw Vale Edinburgh
Glasgow Leeds London Manchester Newcastle Reading Southampton