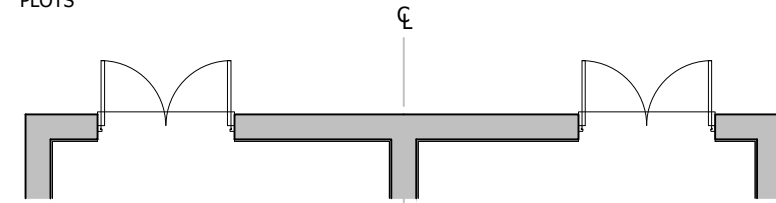


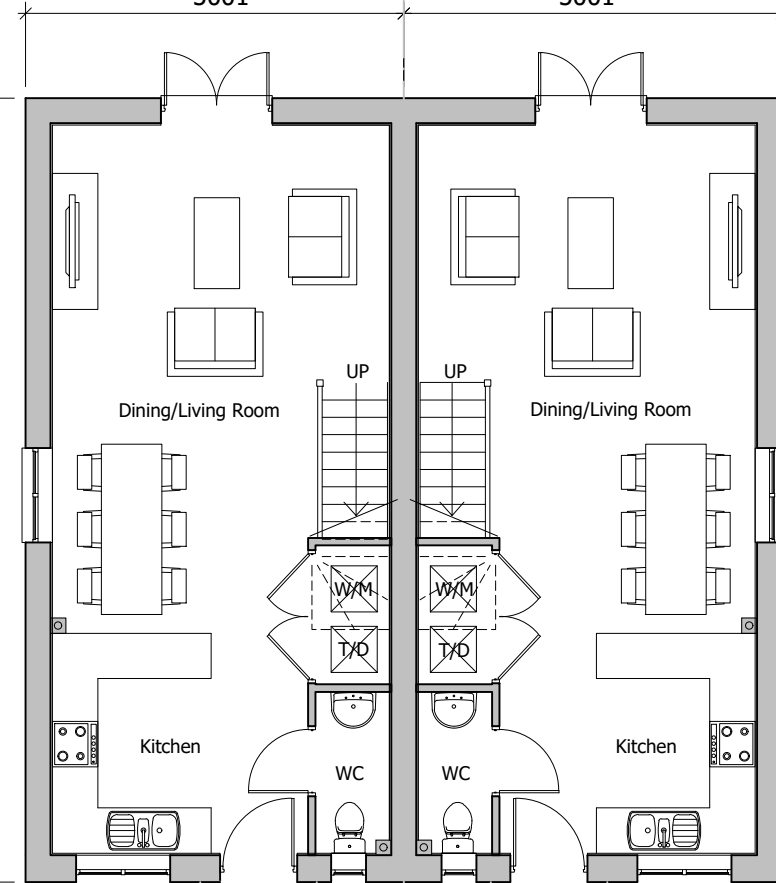
The scaling of this drawing cannot be assured

Revision	Date	Drn	Ckd
-	Planning application submission	30.08.19	EM CB
P1	Revisions undertaken to LPA consultation responses and feedback	28.02.20	ROR ST
P2	Plot numbers updated in line with revised layout to LPA comments	15.04.21	PL ROR

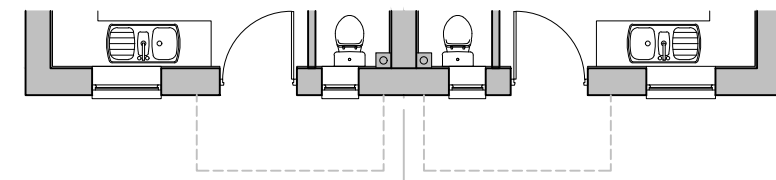
LARGER PATIO DOORS TO VILLAGE STREET PLOTS



5001 5001

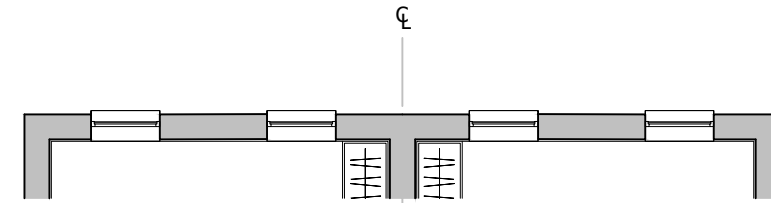


GROUND FLOOR PLAN

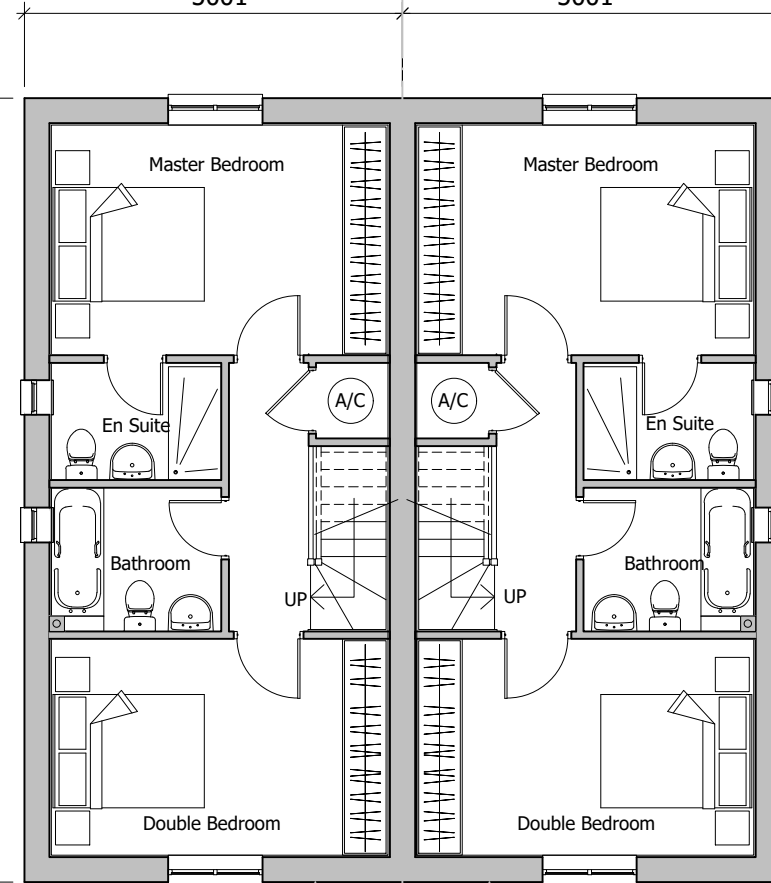


SMALLER KITCHEN WINDOW TO VILLAGE STREET PLOTS

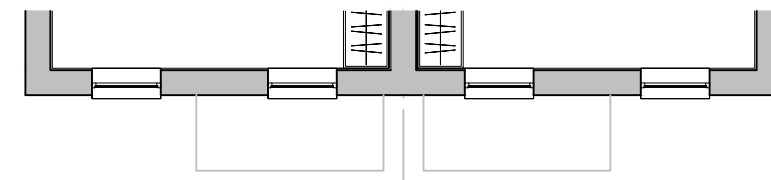
TWO WINDOWS TO VILLAGE STREET PLOTS



5001 5001

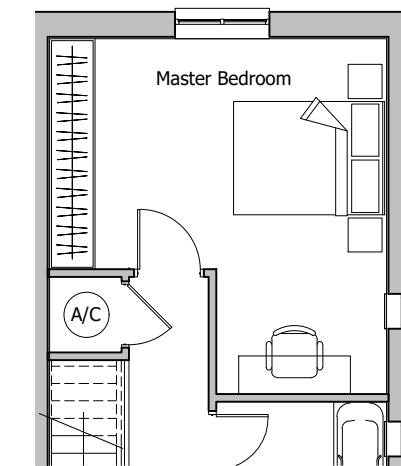


FIRST FLOOR PLAN



TWO WINDOWS TO VILLAGE STREET PLOTS

En-suite removed from plots 5, 6, 31 & 32



PLOT NUMBERS:
(as single plots)
AS: 6, 32, 33, 34, 59, 65, 66, 69, 75, 90, 93, 99
OPP: 5, 31, 35, 37, 57, 58, 60, 64, 68, 74, 78, 94, 100

REFER TO SITE LAYOUT MATERIAL PLAN A-P10-017 FOR INDIVIDUAL PLOT MATERIALS

PARKING	
ON PLOT DRIVEWAY	2
GARAGE/CAR PORT	0

GENERAL PRINCIPLE PARKING PROVISION REFER TO SITE LAYOUT HOUSING MIX A-P10-015 FOR INDIVIDUAL PLOT SITUATIONS



SCALE 1:100

PLANNING

Project
**LAND AT TEVERSHAM ROAD
FULBOURN**

Drawing Title
**HOUSE TYPE A
FLOOR PLANS**

Date	Scale	Drawn by	Check by
15.07.19	1:100@A3	WL	ST
Project No	Drawing No	Revision	
28815	28815-P11-10	P2	

Note: Window positions and sizes may vary slightly dependent on house type character area location (internal layout is constant). This floor plan reflects the Village Lane character area variant. Please refer to general arrangement elevation drawings (P13 series) for each character area.



Planning • Master Planning & Urban Design • Architecture • Landscape Planning & Design • Environmental Planning • Graphic Communication • Public Engagement • Development Economics

bartonwillmore.co.uk



Offices at Birmingham Bristol Cambridge Cardiff Ebbsfleet Edinburgh Glasgow Leeds London Manchester Newcastle Reading Southampton