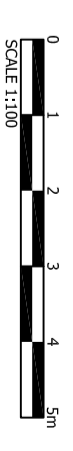
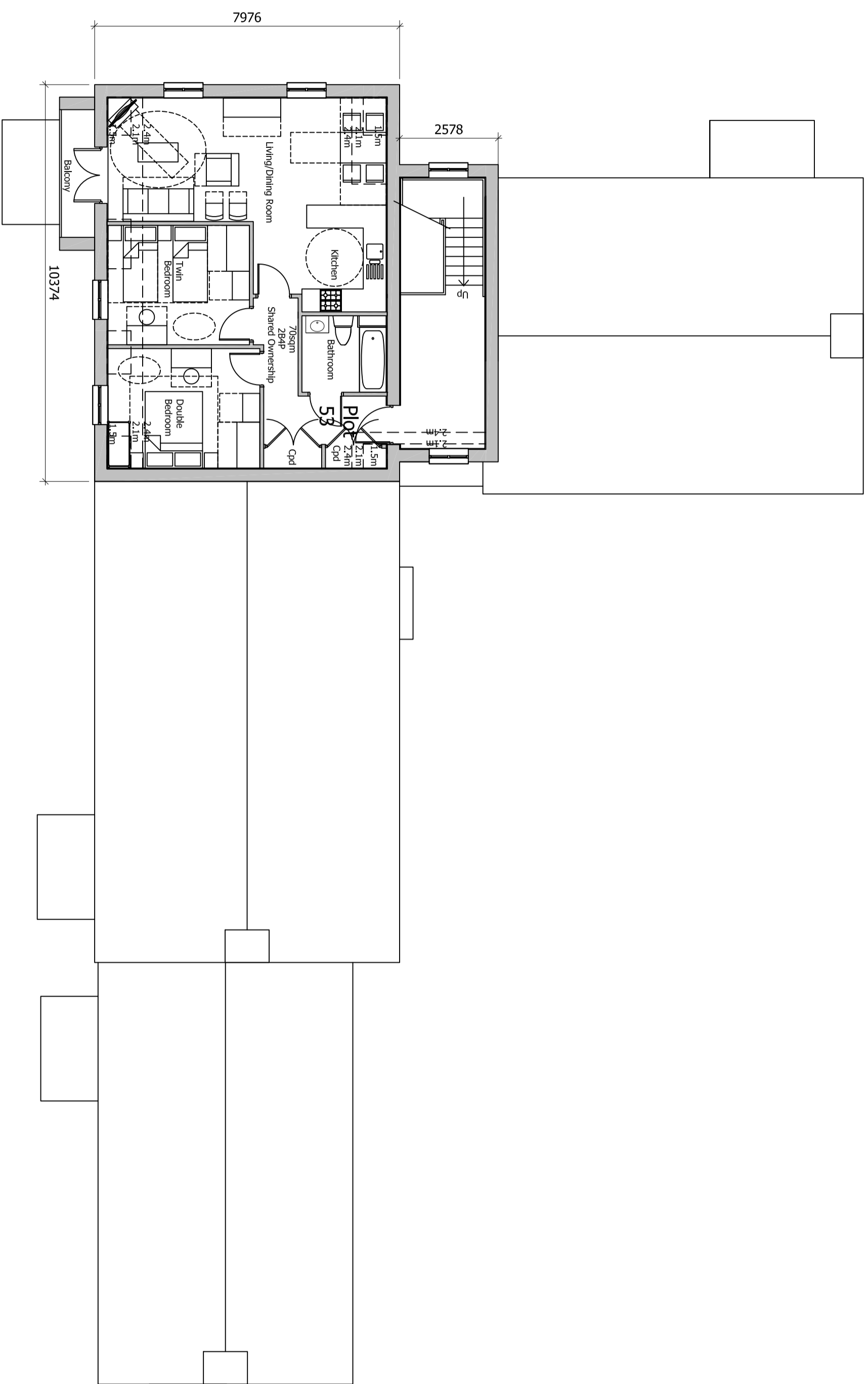


The scaling of this drawing cannot be assured

Revision	Date	Drn	Ckd
- Planning application submission	30.08.19	EM	CB
P1 Revisions undertaken to LPA consultation responses and feedback	28.02.20	ROR	ST
P2 Juliet balconies removed	08.06.20	ROR	PN



SCALE 1:100

PLANNING

Project
LAND AT TEVERSHAM ROAD
FULBOURN

Drawing Title
APARTMENT BLOCK A
SECOND FLOOR

Date	15.07.19	Scale	1:100@A2	Drawn by	WL	Check by	ST
Project No	28815	Drawing No	28815-P11-92	Revision	P2		

**BARTON
WILMORE**

Planning • Master Planning & Urban Design • Architecture •
Landscape Planning & Design • Environmental Planning • Graphic
Communication • Public Engagement • Development Economics

batonwillmore.co.uk



Offices at Birmingham Birelat Cambridge Cardiff Exeter Edinburgh
Glasgow Leeds London Manchester Newcastle Reading Southampton