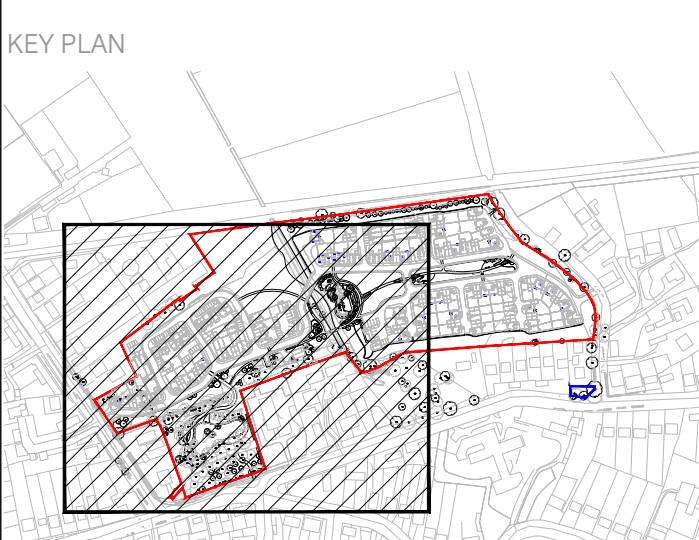


This document should not be relied on or used in circumstances other than those for which it was prepared and for which Chris Blandford Associates was commissioned. Chris Blandford Associates accepts no responsibility for this document to any other party other than the person by whom it was commissioned.

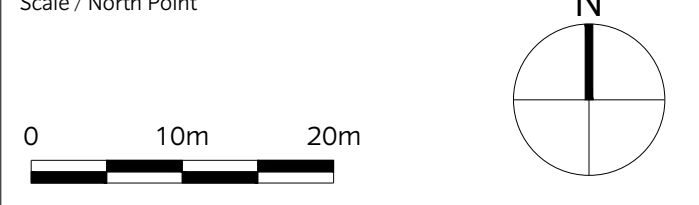
- KEY**
- Site boundary
 - Other Land Under Applicant's Control
 - Existing trees to be retained
 - Proposed trees
 - Proposed Meadow Area - 1175 m²
 - Proposed native buffer planting
 - Proposed native tree / shrub mix
 - Proposed aquatic / marginal planting Area - 500 m² approx.
For list of proposed species, refer to Planting strategy drawings: TRF-CBA-1-GF-M2-L-4000 & TRF-CBA-1-GF-M2-L-4001

NOTE:

- For informal play & LEAP planting plans refer to drawing TRF-CBA-1-GF-M2-L-4017
- For overall planting schedule refer to drawing TRF-CBA-1-GF-M2-L-4011



P1	02/03/20	PC	Revised Reserved Matters Application
SO	08/11/19	SM	Stage 3 Issue
PO	13/09/19	SM	Issued For Planning
Rev	Date	Drw	Revision or reason for Issue



CHRIS BLANDFORD ASSOCIATES
 landscape | environment | heritage
 The Print Rooms Studio 511 164/180 Union St Waterloo London SE1 0LH
 T +44 (0)20 7089 6480 E mail cbastudios.com W www.cbastudios.com

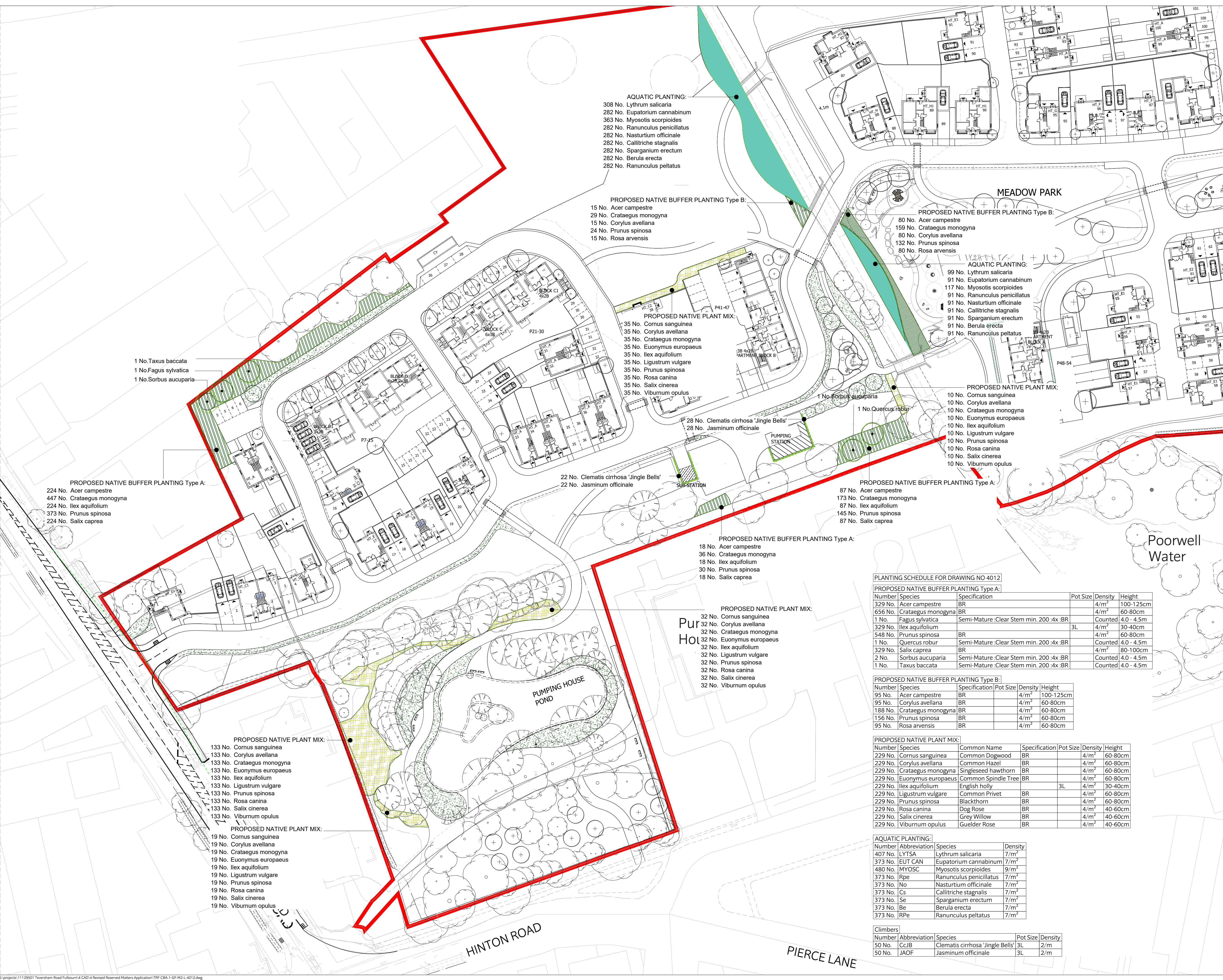
Client
Castlefield International Limited

Project Title
TEVERSHAM ROAD FULBOURN

Drawing Series and Title
4000 SERIES
Planting Plan Sheet 1 of 6

Scale @ A1
 1:500
 Drawn
 SM
 Approved
 AS
 Date
 SEP 2019
 Drawing Status
FOR PLANNING

Drawing number
TRF-CBA-1-GF-M2-L-4012
 Revision
P1



- AQUATIC PLANTING:**
- 308 No. Lythrum salicaria
 - 282 No. Eupatorium cannabinum
 - 363 No. Myosotis scorpioides
 - 282 No. Ranunculus penicillatus
 - 282 No. Nasturtium officinale
 - 282 No. Callitriche stagnalis
 - 282 No. Sparganium erectum
 - 282 No. Berula erecta
 - 282 No. Ranunculus peltatus

- PROPOSED NATIVE BUFFER PLANTING Type B:**
- 15 No. Acer campestre
 - 29 No. Crataegus monogyna
 - 15 No. Corylus avellana
 - 24 No. Prunus spinosa
 - 15 No. Rosa arvensis

- PROPOSED NATIVE BUFFER PLANTING Type B:**
- 80 No. Acer campestre
 - 159 No. Crataegus monogyna
 - 80 No. Corylus avellana
 - 132 No. Prunus spinosa
 - 80 No. Rosa arvensis

- AQUATIC PLANTING:**
- 99 No. Lythrum salicaria
 - 91 No. Eupatorium cannabinum
 - 117 No. Myosotis scorpioides
 - 91 No. Ranunculus penicillatus
 - 91 No. Nasturtium officinale
 - 91 No. Callitriche stagnalis
 - 91 No. Sparganium erectum
 - 91 No. Berula erecta
 - 91 No. Ranunculus peltatus

- PROPOSED NATIVE PLANT MIX:**
- 35 No. Cornus sanguinea
 - 35 No. Corylus avellana
 - 35 No. Crataegus monogyna
 - 35 No. Euonymus europaeus
 - 35 No. Ilex aquifolium
 - 35 No. Ligustrum vulgare
 - 35 No. Prunus spinosa
 - 35 No. Rosa canina
 - 35 No. Salix cinerea
 - 35 No. Viburnum opulus

- PROPOSED NATIVE PLANT MIX:**
- 10 No. Cornus sanguinea
 - 10 No. Corylus avellana
 - 10 No. Crataegus monogyna
 - 10 No. Euonymus europaeus
 - 10 No. Ilex aquifolium
 - 10 No. Ligustrum vulgare
 - 10 No. Prunus spinosa
 - 10 No. Rosa canina
 - 10 No. Salix cinerea
 - 10 No. Viburnum opulus

- PROPOSED NATIVE BUFFER PLANTING Type A:**
- 22 No. Clematis cirrhosa 'Jingle Bells'
 - 22 No. Jasminum officinale

- PROPOSED NATIVE BUFFER PLANTING Type A:**
- 87 No. Acer campestre
 - 173 No. Crataegus monogyna
 - 87 No. Ilex aquifolium
 - 145 No. Prunus spinosa
 - 87 No. Salix caprea

- PROPOSED NATIVE BUFFER PLANTING Type A:**
- 18 No. Acer campestre
 - 36 No. Crataegus monogyna
 - 18 No. Ilex aquifolium
 - 30 No. Prunus spinosa
 - 18 No. Salix caprea

- PROPOSED NATIVE PLANT MIX:**
- 32 No. Cornus sanguinea
 - 32 No. Corylus avellana
 - 32 No. Crataegus monogyna
 - 32 No. Euonymus europaeus
 - 32 No. Ilex aquifolium
 - 32 No. Ligustrum vulgare
 - 32 No. Prunus spinosa
 - 32 No. Rosa canina
 - 32 No. Salix cinerea
 - 32 No. Viburnum opulus

- PROPOSED NATIVE BUFFER PLANTING Type A:**
- 224 No. Acer campestre
 - 447 No. Crataegus monogyna
 - 224 No. Ilex aquifolium
 - 373 No. Prunus spinosa
 - 224 No. Salix caprea

- PROPOSED NATIVE PLANT MIX:**
- 133 No. Cornus sanguinea
 - 133 No. Corylus avellana
 - 133 No. Crataegus monogyna
 - 133 No. Euonymus europaeus
 - 133 No. Ilex aquifolium
 - 133 No. Ligustrum vulgare
 - 133 No. Prunus spinosa
 - 133 No. Rosa canina
 - 133 No. Salix cinerea
 - 133 No. Viburnum opulus

- PROPOSED NATIVE PLANT MIX:**
- 19 No. Cornus sanguinea
 - 19 No. Corylus avellana
 - 19 No. Crataegus monogyna
 - 19 No. Euonymus europaeus
 - 19 No. Ilex aquifolium
 - 19 No. Ligustrum vulgare
 - 19 No. Prunus spinosa
 - 19 No. Rosa canina
 - 19 No. Salix cinerea
 - 19 No. Viburnum opulus

PLANTING SCHEDULE FOR DRAWING NO 4012

PROPOSED NATIVE BUFFER PLANTING Type A:

Number	Species	Specification	Pot Size	Density	Height
329 No.	Acer campestre	BR		4/m ²	100-125cm
656 No.	Crataegus monogyna	BR		4/m ²	60-80cm
1 No.	Fagus sylvatica	Semi-Mature :Clear Stem min. 200 :4x :BR		Counted	4.0 - 4.5m
329 No.	Ilex aquifolium		3L	4/m ²	30-40cm
548 No.	Prunus spinosa	BR		4/m ²	60-80cm
1 No.	Quercus robur	Semi-Mature :Clear Stem min. 200 :4x :BR		Counted	4.0 - 4.5m
329 No.	Salix caprea	BR		4/m ²	80-100cm
2 No.	Sorbus aucuparia	Semi-Mature :Clear Stem min. 200 :4x :BR		Counted	4.0 - 4.5m
1 No.	Taxus baccata	Semi-Mature :Clear Stem min. 200 :4x :BR		Counted	4.0 - 4.5m

PROPOSED NATIVE BUFFER PLANTING Type B:

Number	Species	Specification	Pot Size	Density	Height
95 No.	Acer campestre	BR		4/m ²	100-125cm
95 No.	Corylus avellana	BR		4/m ²	60-80cm
188 No.	Crataegus monogyna	BR		4/m ²	60-80cm
156 No.	Prunus spinosa	BR		4/m ²	60-80cm
95 No.	Rosa arvensis	BR		4/m ²	60-80cm

PROPOSED NATIVE PLANT MIX:

Number	Species	Common Name	Specification	Pot Size	Density	Height
229 No.	Cornus sanguinea	Common Dogwood	BR		4/m ²	60-80cm
229 No.	Corylus avellana	Common Hazel	BR		4/m ²	60-80cm
229 No.	Crataegus monogyna	Singleseed hawthorn	BR		4/m ²	60-80cm
229 No.	Euonymus europaeus	Common Spindle Tree	BR		4/m ²	60-80cm
229 No.	Ilex aquifolium	English holly		3L	4/m ²	30-40cm
229 No.	Ligustrum vulgare	Common Privet	BR		4/m ²	60-80cm
229 No.	Prunus spinosa	Blackthorn	BR		4/m ²	60-80cm
229 No.	Rosa canina	Dog Rose	BR		4/m ²	40-60cm
229 No.	Salix cinerea	Grey Willow	BR		4/m ²	40-60cm
229 No.	Viburnum opulus	Guelder Rose	BR		4/m ²	40-60cm

AQUATIC PLANTING:

Number	Abbreviation	Species	Density
407 No.	LYTSA	Lythrum salicaria	7/m ²
373 No.	EUT CAN	Eupatorium cannabinum	7/m ²
480 No.	MYOSC	Myosotis scorpioides	9/m ²
373 No.	Rpe	Ranunculus penicillatus	7/m ²
373 No.	No	Nasturtium officinale	7/m ²
373 No.	Cs	Callitriche stagnalis	7/m ²
373 No.	Se	Sparganium erectum	7/m ²
373 No.	Be	Berula erecta	7/m ²
373 No.	RPe	Ranunculus peltatus	7/m ²

Climbers

Number	Abbreviation	Species	Pot Size	Density
50 No.	CcJB	Clematis cirrhosa 'Jingle Bells'	3L	2/m
50 No.	JAOF	Jasminum officinale	3L	2/m