

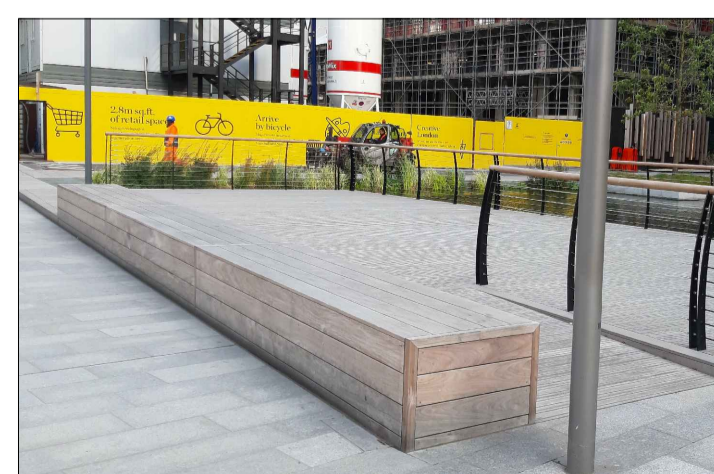


1 LEAP Plan  
Scale: 1:200

PROPOSED FURNITURE



**B1** Proposed Bench | Tiptree Seat | Supplier: Broxap | Product Code: BX14 4030-BP | Galvanized steel legs with treated softwood | Finish: Black powder coated for metal members & arm rests | Fixing: Root fixed as per manufacturer's specifications



**B2** Proposed Bench | Bespoke Bench | Fixing: As per manufacturer's specifications For details ref. to drawing TRF-CBA-1-GF-M2-L-8300



**CS** Proposed Cycle Stands Sheffield Cycle Stand | Supplier: Broxap | Product Code: BXMW/GS/Sheffield-Stand | Finish: Galvanized steel Black powder coated | Fixing: Root fixed as per manufacturer's specifications



**LB** Proposed Litter Bins | Litter Bins with lid | Supplier: Furnitubes - Tenby Litter Bin | Product Code: TSL 231 | Dimensions: 530(a) x 750 (H) | Fixing: Root fixed as per manufacturer's detail specifications



**BO1** Proposed Timber Bollard | Supplier: Broxap | Product Code: BX17 Painted - Square | Dimensions: 150x150mm x1000mm | Fixing: Fixed into concrete footing. Reflective bands in rebates. Granite setts surrounded.

PROPOSED PLAY ELEMENTS



**PE1** Cradle Nest Special | Supplier: Timber Play | Product Code: 6.14520 | Fixing: As per manufacturer's detail specifications



**PE2** Toddler Twin Swing | Supplier: Timber Play | Product Code: 6.12720 | Fixing: As per manufacturer's detail specifications



**PE3** Stepping Stones | Granite | Varied shapes with min. size 0.9 x 0.9 m | Finish: Flamed | Colour: Beige | Contractor to submit proposal



**PE4** Slide | Stainless Steel | 3500 L x 1500 W x 1800 + 550mm H | Attached at top and bottom with mounting plates | Product: 3.84210 | Supplier: Richter Spielgerate GmbH | Fixed to manufacturer's recommendation



**PE5** Wobble Dish | Supplier: Timber Play | Product Code: 6.27300 | Fixing: As per manufacturer's detail specifications



**PE6** 3 Stepping logs | Supplier: Timber Play | Product Codes: 6.82003; 6.82004; 6.82005 | Fixing: As per manufacturer's specifications



**PE7** Large Spinner | Supplier: Timber Play | Product Code: 6.26402 | Fixing: As per manufacturer's detail specifications



**PE8** Little Chicken | Supplier: Timber Play | Product Code: 4.08100 | Fixing: As per manufacturer's detail specifications



**PE9** Small Hexagonal Hut with roof | Supplier: Timber Play | Product Code: 3.15300 | Fixing: As per manufacturer's detail specifications



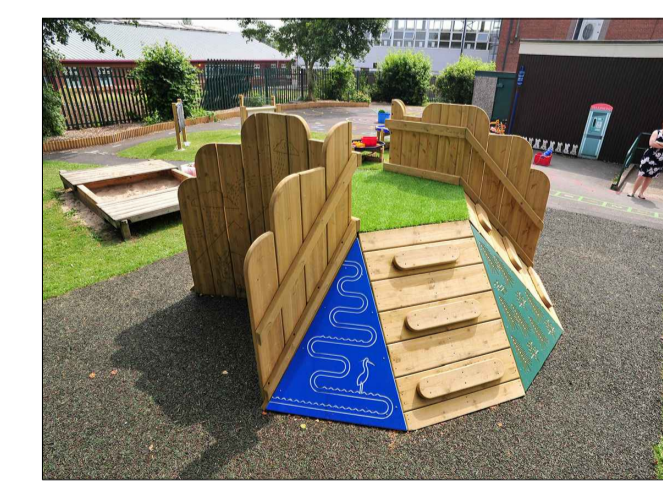
**PE10** Bespoke Play Feature. For details ref. to drawing TRF-CBA-1-GF-M2-L-8301



**PE11** Bespoke Timber Logs | Fixing: As per manufacturer's detail specifications



**PE12** Boulders | Sizes: 900 mm x 600 mm x 600 mm | Supplier: CED Natural stone or similar approved



**PE13** Mount Ridge Play Unit | Supplier: Hand Made Places | Product Code: BX/HMP 250035 | Fixing: As per manufacturer's detail specifications

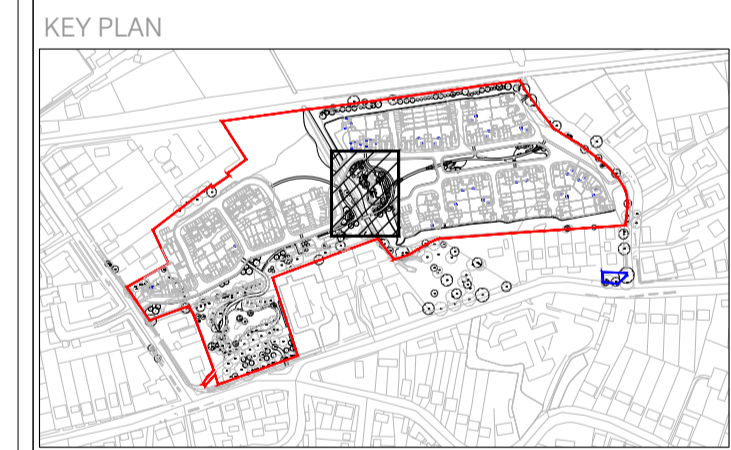
This document should not be relied on or used in circumstances other than those for which it was prepared and for which Chris Blandford Associates was commissioned. Chris Blandford Associates accepts no responsibility for this document to any other party other than the person by whom it was commissioned.

Key

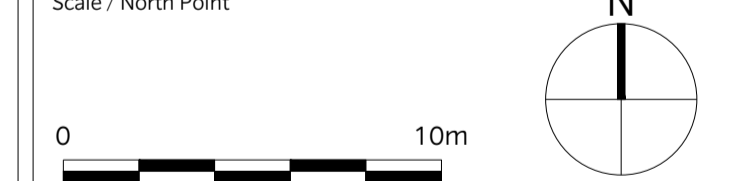
- Existing tree
- Existing hedge along chalk stream to be thinned as per ecologist guidance
- Proposed tree
- Proposed specimen shrub
- Proposed hedge
- Proposed shrub planting
- Proposed lawn
- Proposed wildflower meadow
- Fence to play area
- Access gate to play area
- Safety surfacing
- CS- Proposed cycle stand
- LB - Proposed litter bin
- SI - Proposed signage (to include information as: no dogs allowed, appropriate play age group)

Note:

- For materials/ finishes refer to Hard Landscape Strategy: TRF-CBA-1-GF-M2-L-1010 and TRF-CBA-1-GF-M2-L-1011
- For planting strategy for surrounding areas, refer to TRF-CBA-1-GF-M2-L-4000 and TRF-CBA-1-GF-M2-L-4001
- For planting species, refer to Planting Schedule TRF-CBA-1-GF-M2-L-4011



Rev	Date	Drw	Revision or reason for Issue
P4	12/04/21	AS	For Planning
P3	10/06/20	PC	Revised Reserved Matters Application
P2	28/02/20	MA	Revised Reserved Matters Application
SO	08/11/19	MA	Stage 3 Issue
P1	06/09/19	SM	Issued For Planning
PO	23/08/19	MA	Issued For Planning



CHRIS BLANDFORD ASSOCIATES  
landscape | environment | heritage

Client  
Castlefield International Limited

Project Title  
TEVERSHAM ROAD FULBOURN

Drawing Series and Title  
Detail Plan  
LEAP

Scale @ A1  
1:200

Drawn  
PC

Date  
AUG 2019

Approved  
AS

FOR PLANNING

Drawing number  
TRF-CBA-1-GF-M2-L-2000

Revision  
P4