

PLANTING SCHEDULE FOR DRAWING NO 4013

**PROPOSED NATIVE PLANT MIX:**

Number	Species	Specification	Density	Height
245	Cornus sanguinea	BR	4/m <sup>2</sup>	60-80cm
245	Corylus avellana	BR	4/m <sup>2</sup>	60-80cm
245	Crataegus monogyna	BR	4/m <sup>2</sup>	60-80cm
245	Euonymus europaeus	BR	4/m <sup>2</sup>	60-80cm
245	Ilex aquifolium	BR	4/m <sup>2</sup>	30-40cm
245	Ligustrum vulgare	BR	4/m <sup>2</sup>	60-80cm
245	Prunus spinosa	BR	4/m <sup>2</sup>	60-80cm
245	Rosa canina	BR	4/m <sup>2</sup>	40-60cm
245	Salix cinerea	BR	4/m <sup>2</sup>	40-60cm
245	Viburnum opulus	BR	4/m <sup>2</sup>	40-60cm

**PROPOSED NATIVE BUFFER PLANTING Type A:**

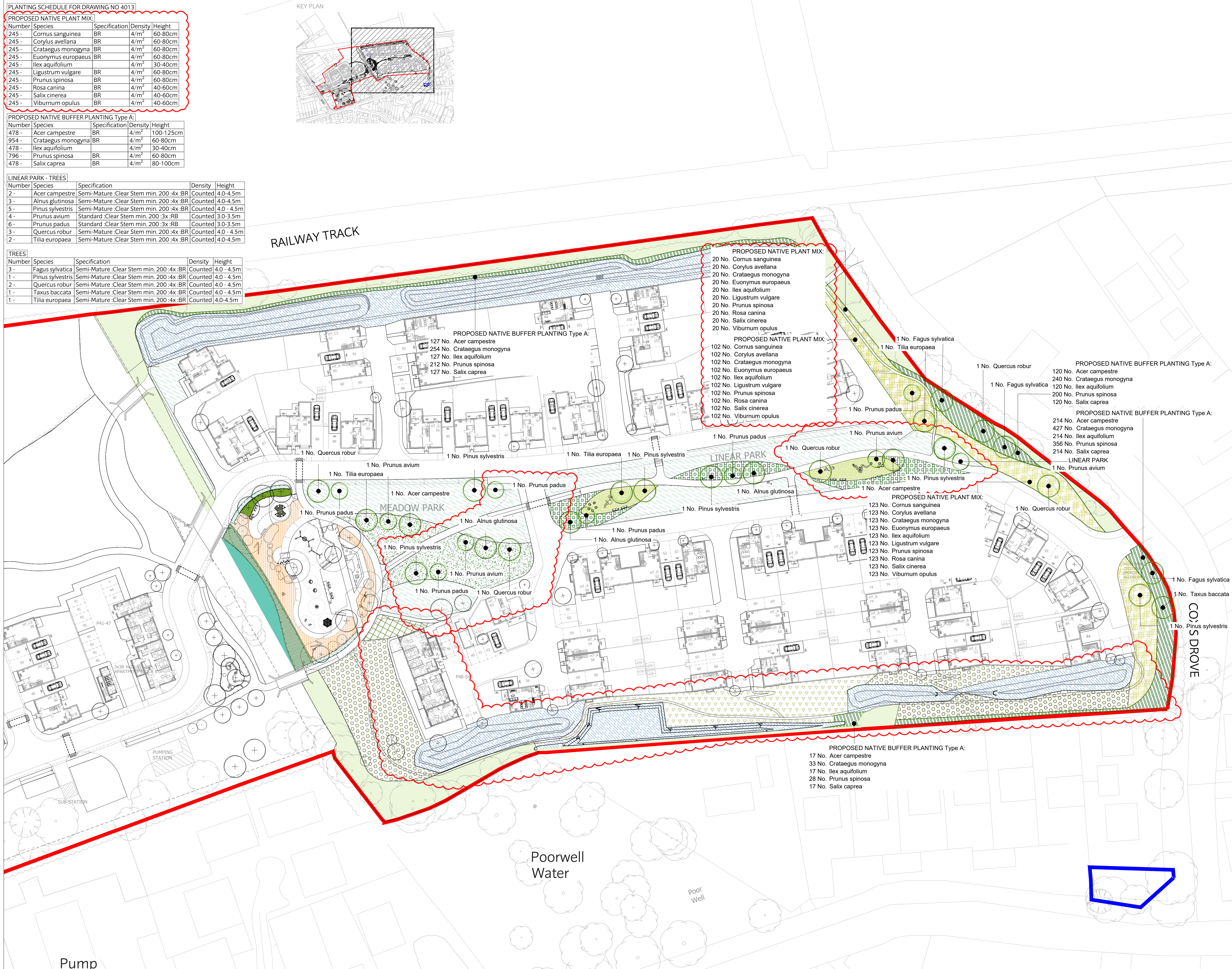
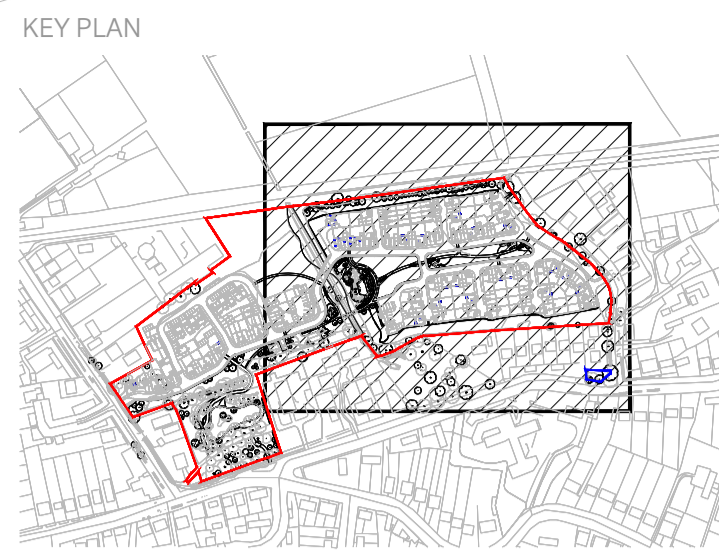
Number	Species	Specification	Density	Height
478	Acer campestre	BR	4/m <sup>2</sup>	100-125cm
954	Crataegus monogyna	BR	4/m <sup>2</sup>	60-80cm
478	Ilex aquifolium	BR	4/m <sup>2</sup>	30-40cm
796	Prunus spinosa	BR	4/m <sup>2</sup>	60-80cm
478	Salix caprea	BR	4/m <sup>2</sup>	80-100cm

**LINEAR PARK - TREES**

Number	Species	Specification	Density	Height
2	Acer campestre	Semi-Mature :Clear Stem min. 200 :4x :BR	Counted	4.0-4.5m
3	Alnus glutinosa	Semi-Mature :Clear Stem min. 200 :4x :BR	Counted	4.0-4.5m
5	Pinus sylvestris	Semi-Mature :Clear Stem min. 200 :4x :BR	Counted	4.0-4.5m
4	Prunus avium	Standard :Clear Stem min. 200 :3x :RB	Counted	3.0-3.5m
6	Prunus padus	Standard :Clear Stem min. 200 :3x :RB	Counted	3.0-3.5m
3	Quercus robur	Semi-Mature :Clear Stem min. 200 :4x :BR	Counted	4.0-4.5m
2	Tilia europaea	Semi-Mature :Clear Stem min. 200 :4x :BR	Counted	4.0-4.5m

**TREES**

Number	Species	Specification	Density	Height
3	Fagus sylvatica	Semi-Mature :Clear Stem min. 200 :4x :BR	Counted	4.0-4.5m
1	Pinus sylvestris	Semi-Mature :Clear Stem min. 200 :4x :BR	Counted	4.0-4.5m
2	Quercus robur	Semi-Mature :Clear Stem min. 200 :4x :BR	Counted	4.0-4.5m
1	Taxus baccata	Semi-Mature :Clear Stem min. 200 :4x :BR	Counted	4.0-4.5m
1	Tilia europaea	Semi-Mature :Clear Stem min. 200 :4x :BR	Counted	4.0-4.5m



This document should not be relied on or used in circumstances other than those for which it was prepared and for which Chris Blandford Associates was commissioned. Chris Blandford Associates accepts no responsibility for this document to any other party other than the person by whom it was commissioned.

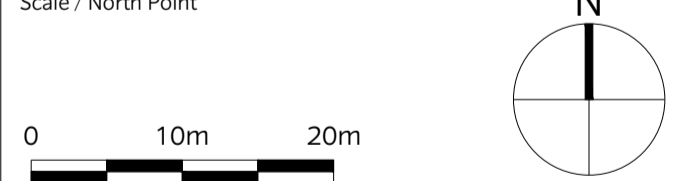
**KEY**

- Application boundary
- Other Land Under Applicant's Control
- Planting strategy - Open spaces
- Existing vegetation
- Existing trees to be retained
- Proposed trees
- Existing Woodland to be retained
- Habitat retention/ translocation areas
- Existing landscape retained
- Retained landscape with additional grass seed as required for making good
- Proposed meadow
- Proposed wildflower mix
- Bio retention basins
- Proposed native buffer planting Type A
- Proposed native buffer planting Type B
- Proposed native plant mix
- Proposed lawn: Lindrum Festival Landscape Turf - LT7
- Linear Park
- Proposed flowering lawn
- Proposed aquatic / marginal planting
- Planting strategy - around built areas
- Proposed road verges
- Private front gardens
- Proposed hedge
- Proposed climbers

**NOTE:**

- For informal play & LEAP planting plans refer to drawing TRF-CBA-1-GF-M2-L-4017
- For overall planting schedule refer to drawing TRF-CBA-1-GF-M2-L-4011

Rev	Date	Drw	Issued For Planning
P4	12/04/21	PC	Revised submission
P3	23/06/20	PC	Revised submission
P2	13/03/20	PC	Revised submission
P1	02/03/20	PC	Revised Reserved Matters Application
SO	08/11/19	SM	Stage 3 Issue
PO	13/09/19	SM	Issued For Planning



**CHRIS BLANDFORD ASSOCIATES**  
 landscape | environment | heritage  
 The Print Rooms Studio 511 164/180 Union St Waterloo London SE1 0LH  
 T +44 (0)20 7089 6480 E mail@cbastudios.com W www.cbastudios.com

Client  
**Castlefield International Limited**

Project Title  
**TEVERSHAM ROAD FULBORN**

Drawing Series and Title  
**4000 SERIES**  
**Planting Plan Sheet 2 of 6**

Scale @ A1  
 1:500  
 Drawn  
 Pc  
 Approved  
 AS  
 Date  
 SEP 2019  
 Drawing Status  
**FOR PLANNING**

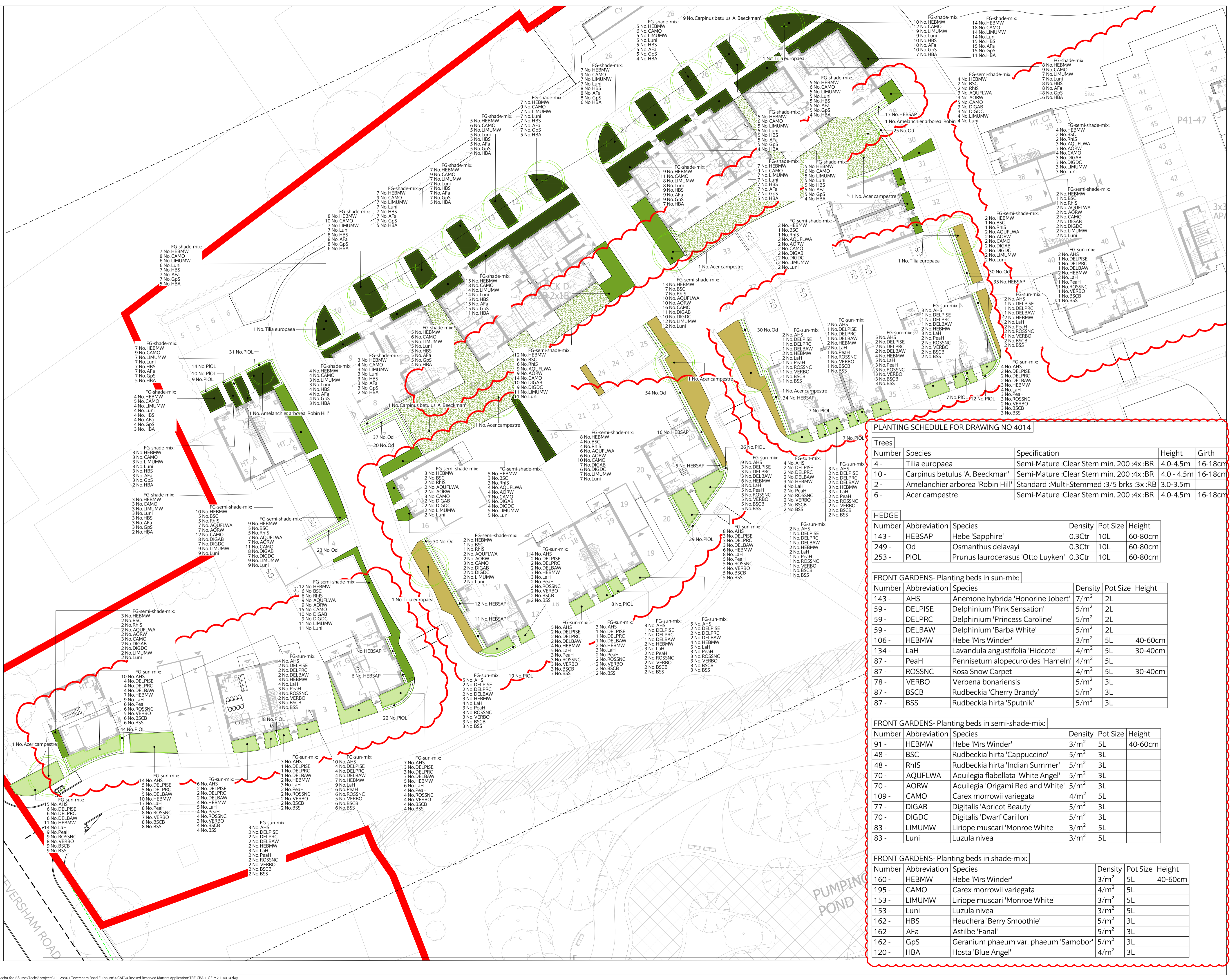
Drawing number  
**TRF-CBA-1-GF-M2-L-4013**  
 Revision  
**P4**



This document should not be relied on or used in circumstances other than those for which it was prepared and for which Chris Blandford Associates was commissioned. Chris Blandford Associates accepts no responsibility for this document to any other party other than the person by whom it was commissioned.

**KEY**

- Site boundary
- Other Land Under Applicant's Control
- Existing trees to be retained
- Proposed trees
- PRIVATE FRONT GARDENS - Planting beds in sun-mix
- PRIVATE FRONT GARDENS - Planting beds in semi-shade mix
- PRIVATE FRONT GARDENS - Planting beds in shade mix
- PROPOSED ROAD VERGES  
Product: Species Rich Lawn Turf  
Supplier: Wildflower Turf Ltd
- Proposed lawn: Lindum Festival Landscape Turf L77



**PLANTING SCHEDULE FOR DRAWING NO 4014**

Number	Species	Specification	Height	Girth
4 -	Tilia europaea	Semi-Mature :Clear Stem min. 200 :4x :BR	4.0-4.5m	16-18cm
10 -	Carpinus betulus 'A. Beekman'	Semi-Mature :Clear Stem min. 200 :4x :BR	4.0 - 4.5m	16-18cm
2 -	Amelanchier arborea 'Robin Hill'	Standard :Multi-Stemmed :3/5 brks :3x :RB	3.0-3.5m	
6 -	Acer campestre	Semi-Mature :Clear Stem min. 200 :4x :BR	4.0-4.5m	16-18cm

**HEDGE**

Number	Abbreviation	Species	Density	Pot Size	Height
143 -	HEBSAP	Hebe 'Sapphire'	0.3Ctr	10L	60-80cm
249 -	Od	Osmanthus delavayi	0.3Ctr	10L	60-80cm
253 -	PIOL	Prunus laurocerasus 'Otto Luyken'	0.3Ctr	10L	60-80cm

**FRONT GARDENS - Planting beds in sun-mix:**

Number	Abbreviation	Species	Density	Pot Size	Height
143 -	AHS	Anemone hybrida 'Honorable Jobert'	7/m <sup>2</sup>	2L	
59 -	DELPISE	Delphinium 'Pink Sensation'	5/m <sup>2</sup>	2L	
59 -	DELPRC	Delphinium 'Princess Caroline'	5/m <sup>2</sup>	2L	
59 -	DELBAW	Delphinium 'Barba White'	5/m <sup>2</sup>	2L	
106 -	HEBMW	Hebe 'Mrs Winder'	3/m <sup>2</sup>	5L	40-60cm
134 -	LaH	Lavandula angustifolia 'Hidcote'	4/m <sup>2</sup>	5L	30-40cm
87 -	Peah	Pennisetum alopecuroides 'Hameln'	4/m <sup>2</sup>	5L	
87 -	ROSSNC	Rosa Snow Carpet	4/m <sup>2</sup>	5L	30-40cm
78 -	VERBO	Verbena bonariensis	5/m <sup>2</sup>	3L	
87 -	BSCB	Rudbeckia 'Cherry Brandy'	5/m <sup>2</sup>	3L	
87 -	BSS	Rudbeckia hirta 'Sputnik'	5/m <sup>2</sup>	3L	

**FRONT GARDENS - Planting beds in semi-shade-mix:**

Number	Abbreviation	Species	Density	Pot Size	Height
91 -	HEBMW	Hebe 'Mrs Winder'	3/m <sup>2</sup>	5L	40-60cm
48 -	BSC	Rudbeckia hirta 'Cappuccino'	5/m <sup>2</sup>	3L	
48 -	RHIS	Rudbeckia hirta 'Indian Summer'	5/m <sup>2</sup>	3L	
70 -	AQFLWA	Aquilegia flabellata 'White Angel'	5/m <sup>2</sup>	3L	
70 -	AORW	Aquilegia 'Origami Red and White'	5/m <sup>2</sup>	3L	
109 -	CAMO	Carex morrowii variegata	4/m <sup>2</sup>	5L	
77 -	DIGAB	Digitalis 'Apricot Beauty'	5/m <sup>2</sup>	3L	
70 -	DIGDC	Digitalis 'Dwarf Carillon'	5/m <sup>2</sup>	3L	
83 -	LIMUMW	Liriope muscari 'Monroe White'	3/m <sup>2</sup>	5L	
83 -	Luni	Luzula nivea	3/m <sup>2</sup>	5L	

**FRONT GARDENS - Planting beds in shade-mix:**

Number	Abbreviation	Species	Density	Pot Size	Height
160 -	HEBMW	Hebe 'Mrs Winder'	3/m <sup>2</sup>	5L	40-60cm
195 -	CAMO	Carex morrowii variegata	4/m <sup>2</sup>	5L	
153 -	LIMUMW	Liriope muscari 'Monroe White'	3/m <sup>2</sup>	5L	
153 -	Luni	Luzula nivea	3/m <sup>2</sup>	5L	
162 -	HBS	Heuchera 'Berry Smoothie'	5/m <sup>2</sup>	3L	
162 -	AfA	Astilbe 'Fanal'	5/m <sup>2</sup>	3L	
162 -	GpS	Geranium phaeum var. phaeum 'Samobor'	5/m <sup>2</sup>	3L	
120 -	HBA	Hosta 'Blue Angel'	4/m <sup>2</sup>	3L	

**NOTE:**

- For informal play & LEAP planting plans refer to drawing TRF-CBA-1-GF-M2-L-4017
- For overall planting schedule refer to drawing TRF-CBA-1-GF-M2-L-4011

**KEY PLAN**

Scale / North Point

0 10m

**CHRIS BLANDFORD ASSOCIATES**  
landscape | environment | heritage

The Print Rooms Studio 511 164/180 Union St Waterloo London SE1 0LH  
T +44 (0)20 7089 6480 E mail:cbastudios.com W www.cbastudios.com

Client  
**Castlefield International Limited**

Project Title  
**TEVERSHAM ROAD FULBOURN**

Drawing Series and Title  
**4000 SERIES  
Planting Plan Sheet 3 of 6**

Scale @ A1  
1:250

Drawn  
SM

Date  
SEP 2019

Approved  
RB

FOR PLANNING

Drawing number  
TRF-CBA-1-GF-M2-L-4014

Revision  
P4





PLANTING PLAN A



PLANTING PLAN B

**PLANTING SCHEDULE FOR DRAWING NO 4015**

Trees	Number	Species	Specification	Height	Girth
4	-	Amelanchier arborea 'Robin Hill'	Standard :Multi Stemmed :3/5 brks :3x :RB	3.0-3.5m	
1	-	Carpinus betulus	Semi-Mature :Clear Stem min. 200 :4x :BR	4.0 - 4.5m	16-18cm
7	-	Acer campestre	Semi-Mature :Clear Stem min. 200 :4x :BR	4.0-4.5m	16-18cm
3	-	Pyrus calleryana 'Chanticleer'	Standard :Clear Stem min. 200 :3x :RB	3.0-3.5m	14-16cm
1	-	Pinus sylvestris	Semi-Mature :Clear Stem min. 200 :4x :BR	4.0 - 4.5m	16-18cm
1	-	Malus floribunda	Standard :Clear Stem min. 200 :3x :RB	3.0-3.5m	14-16cm

**Hedge**

Number	Abbreviation	Species	Density	Pot Size	Height	
99	-	Eujak	0.3Ctr	10L	60-80cm	
59	-	Od	0.3Ctr	10L	60-80cm	
562	-	PIOL	Prunus laurocerasus 'Otto Luyken'	0.3Ctr	10L	60-80cm

**FRONT GARDENS - Planting beds in sun-mix:**

Number	Abbreviation	Species	Density	Pot Size	Height	
106	-	AHS	Anemone hybrida 'Honorine Jobert'	7/m²	2L	
44	-	DELPISE	Delphinium 'Pink Sensation'	5/m²	2L	
44	-	DELPRC	Delphinium 'Princess Caroline'	5/m²	2L	
44	-	DELBAW	Delphinium 'Barba White'	5/m²	2L	
76	-	HEBMW	Hebe 'Mrs Winder'	3/m²	5L	40-60cm
99	-	LAH	Lavandula angustifolia 'Hidcote'	4/m²	5L	30-40cm
63	-	Peah	Pennisetum alopecuroides 'Hameln'	4/m²	5L	
63	-	ROSSNC	Rosa Snow Carpet	4/m²	5L	30-40cm
56	-	VERBO	Verbena bonariensis	5/m²	3L	
63	-	BSCB	Rudbeckia 'Cherry Brandy'	5/m²	3L	
63	-	BSS	Rudbeckia hirta 'Sputnik'	5/m²	3L	

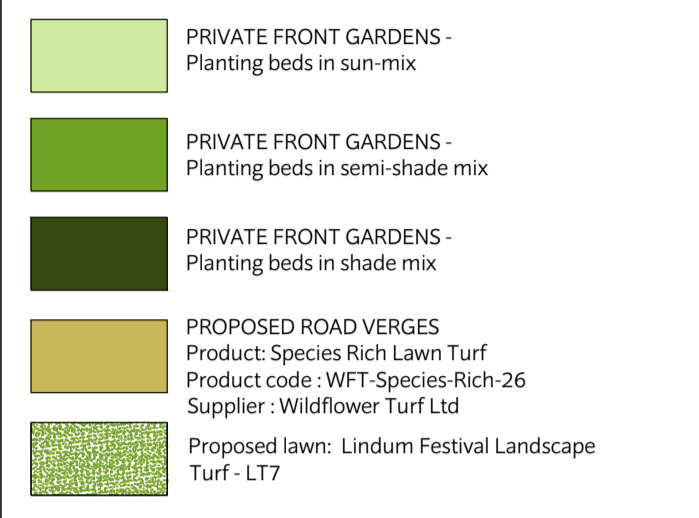
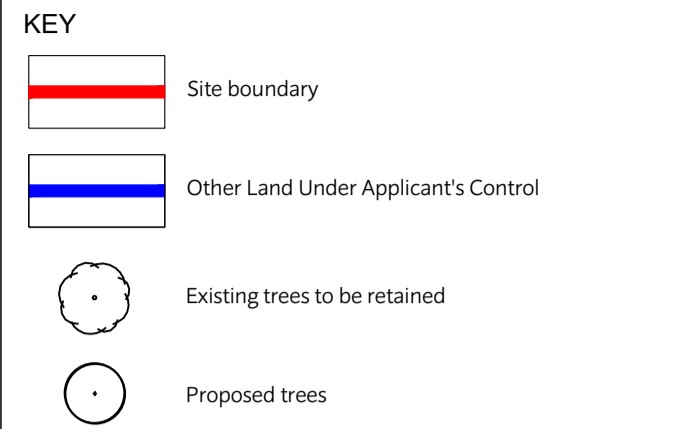
**FRONT GARDENS - Planting beds in semi-shade-mix:**

Number	Abbreviation	Species	Density	Pot Size	Height	
91	-	HEBMW	Hebe 'Mrs Winder'	3/m²	5L	40-60cm
54	-	BSC	Rudbeckia hirta 'Cappuccino'	5/m²	3L	
54	-	RhIS	Rudbeckia hirta 'Indian Summer'	5/m²	3L	
64	-	AQUFLWA	Aquilegia flabellata 'White Angel'	5/m²	3L	
64	-	AORW	Aquilegia 'Origami Red and White'	5/m²	3L	
106	-	CAMO	Carex morrowii variegata	4/m²	5L	
73	-	DIGAB	Digitalis 'Apricot Beauty'	5/m²	3L	
64	-	DIGDC	Digitalis 'Dwarf Carillon'	5/m²	3L	
86	-	LIMUMW	Liriope muscari 'Monroe White'	3/m²	5L	
86	-	Luni	Luzula nivea	3/m²	5L	

**FRONT GARDENS - Planting beds in shade-mix:**

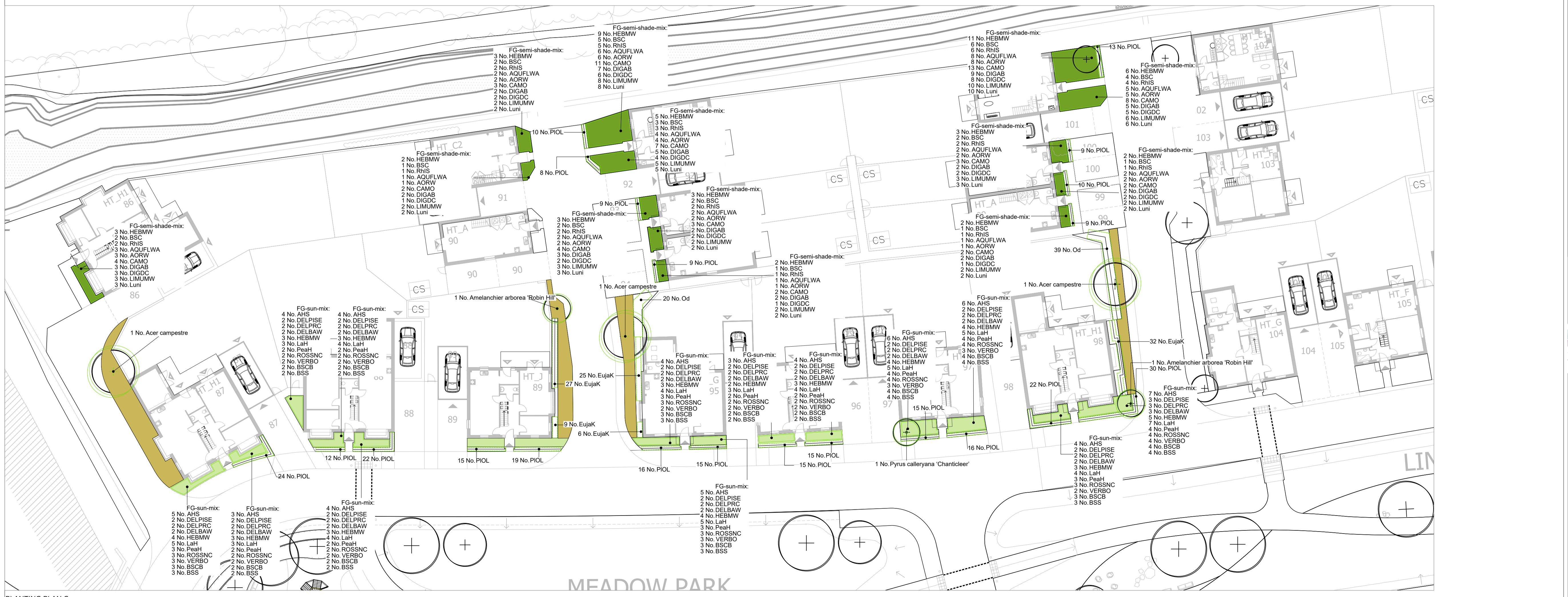
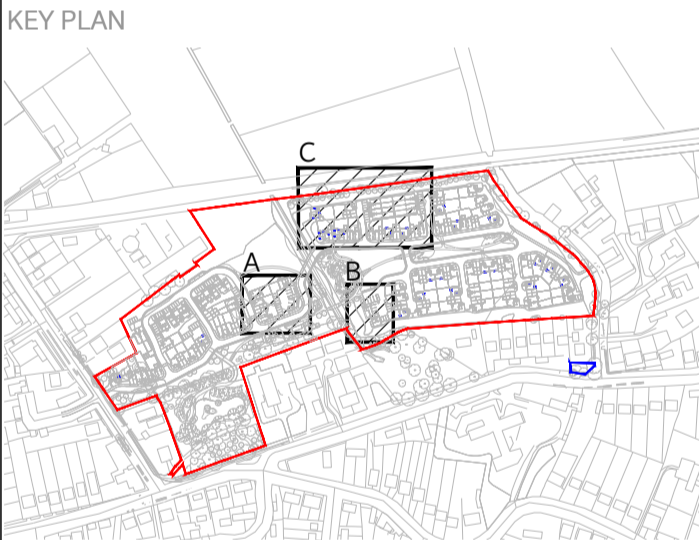
Number	Abbreviation	Species	Density	Pot Size	Height	
3	-	HEBMW	Hebe 'Mrs Winder'	3/m²	5L	40-60cm
3	-	CAMO	Carex morrowii variegata	4/m²	5L	
3	-	LIMUMW	Liriope muscari 'Monroe White'	3/m²	5L	
3	-	Luni	Luzula nivea	3/m²	5L	
3	-	HBS	Heuchera 'Berry Smoothie'	5/m²	3L	
3	-	AFA	Astilbe 'Fanal'	5/m²	3L	
3	-	GpS	Geranium phaeum var. phaeum 'Samobor'	5/m²	3L	
2	-	HBA	Hosta 'Blue Angel'	4/m²	3L	

This document should not be relied on or used in circumstances other than those for which it was prepared and for which Chris Blandford Associates was commissioned. Chris Blandford Associates accepts no responsibility for this document to any other party other than the person by whom it was commissioned.



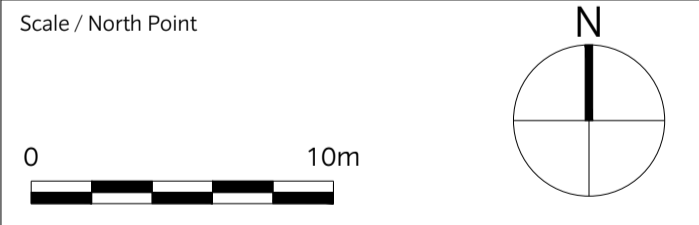
**NOTE:**

- For informal play & LEAP planting plans refer to drawing TRF-CBA-1-GF-M2-L-4017
- For overall planting schedule refer to drawing TRF-CBA-1-GF-M2-L-4011



PLANTING PLAN C

Rev	Date	Drw	Revision or reason for Issue
P4	12/04/21	PC	Revised submission
P3	23/10/20	PC	Revised submission
P2	23/06/20	PC	Revised submission
S1	02/03/20	MA	Revised Reserved Matters Application
P0	08/11/19	SM	Stage 3 Issue
P0	13/09/19	DM	Issued For Planning



**CHRIS BLANDFORD ASSOCIATES**  
landscape | environment | heritage  
The Print Rooms Studio 511 164/180 Union St Waterloo London SE1 0LH  
T +44 (0)20 7089 6480 E mail@cbastudios.com W www.cbastudios.com

Client  
**Castlefield International Limited**

Project Title  
**TEVERSHAM ROAD FULBOURN**

Drawing Series and Title  
**4000 SERIES  
Planting Plan Sheet 4 of 6**

Scale @ A1  
1:250

Drawn  
PC

Date  
SEP 2019

Approved  
RB

FOR PLANNING

Drawing number  
TRF-CBA-1-GF-M2-L-4015

Revision  
P4





**PLANTING SCHEDULE FOR DRAWING NO 4016**

Number	Species	Specification	Height	Girth
4-	Carpinus betulus 'A. Beekman'	Semi-Mature:Clear Stem min. 200 :4x :BR	4.0 - 4.5m	16-18cm
3-	Acer campestre	Semi-Mature:Clear Stem min. 200 :3x :RB	4.0-4.5m	16-18cm
5-	Pyrus calleryana 'Chanticleer'	Standard :Clear Stem min. 200 :3x :RB	3.0-3.5m	14-16cm
6-	Malus floribunda	Standard :Clear Stem min. 200 :3x :RB	3.0-3.5m	14-16cm
6-	Amelanchier arborea 'Robin Hill'	Standard :Multi-Stemmed :3/5 brks :3x :RB	3.0-3.5m	

Number	Abbreviation	Species	Density	Pot Size	Height
1021-	PIOL	Prunus laurocerasus 'Otto Luyken'	0.3Ctr	10L	60-80cm
31-	EujaK	Euonymus japonicus 'Kathy'	0.3Ctr	10L	60-80cm
23-	Od	Osmanthus delavayi	0.3Ctr	10L	60-80cm

**FRONT GARDENS- Planting beds in sun-mix:**

Number	Abbreviation	Species	Density	Pot Size	Height
41-	AHS	Anemone hybrida 'Honore Jobert'	7/m²	2L	
15-	DELPISE	Delphinium 'Pink Sensation'	5/m²	2L	
15-	DELPRC	Delphinium 'Princess Caroline'	5/m²	2L	
15-	DELBAW	Delphinium 'Barba White'	5/m²	2L	
30-	HEBMW	Hebe 'Mrs Winder'	3/m²	5L	40-60cm
37-	LaH	Lavandula angustifolia 'Hidcote'	4/m²	5L	30-40cm
24-	PeaH	Pennisetum alopecuroides 'Hamel'	4/m²	5L	
24-	ROSSNC	Rosa Snow Carpet	4/m²	5L	30-40cm
21-	VERBO	Verbena bonariensis	5/m²	3L	
24-	BSCB	Rudbeckia 'Cherry Brandy'	5/m²	3L	
24-	BSS	Rudbeckia hirta 'Sputnik'	5/m²	3L	

**FRONT GARDENS- Planting beds in semi-shade-mix:**

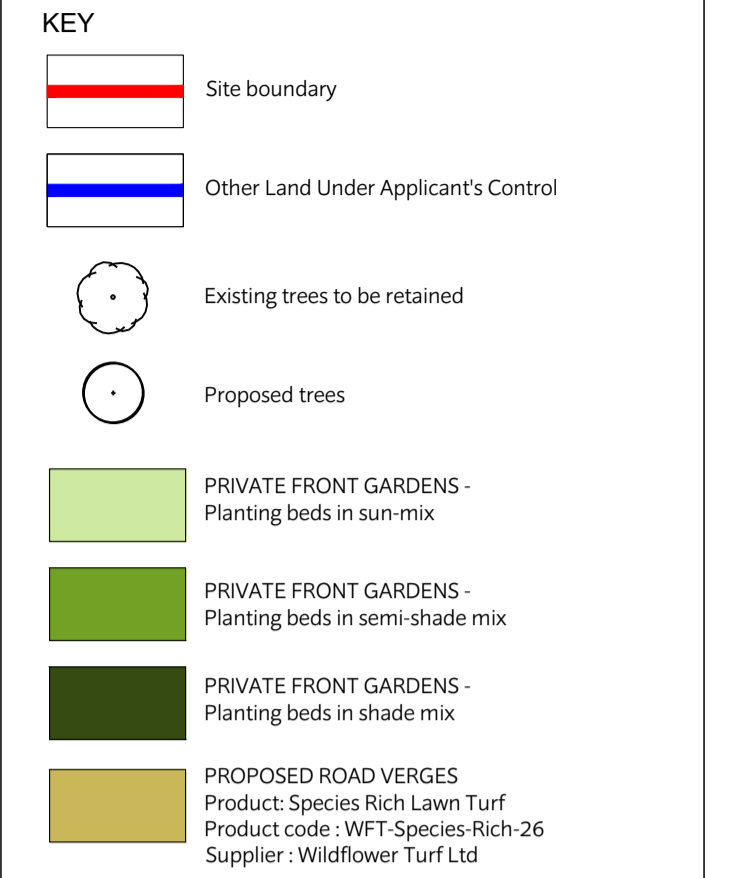
Number	Abbreviation	Species	Density	Pot Size	Height
346-	HEBMW	Hebe 'Mrs Winder'	3/m²	5L	40-60cm
194-	BSC	Rudbeckia hirta 'Cappuccino'	5/m²	3L	
194-	RhIS	Rudbeckia hirta 'Indian Summer'	5/m²	3L	
263-	AQUFLWA	Aquilegia flabellata 'White Angel'	5/m²	3L	
263-	AORW	Aquilegia 'Origami Red and White'	5/m²	3L	
431-	CAMO	Carex morrowii variegata	4/m²	5L	
290-	DIGAB	Digitalis 'Apricot Beauty'	5/m²	3L	
263-	DIGDC	Digitalis 'Dwarf Carillon'	5/m²	3L	
323-	LIMUMW	Liriope muscari 'Monroe White'	3/m²	5L	
323-	Luni	Luzula nivea	3/m²	5L	

**FRONT GARDENS- Planting beds in shade-mix:**

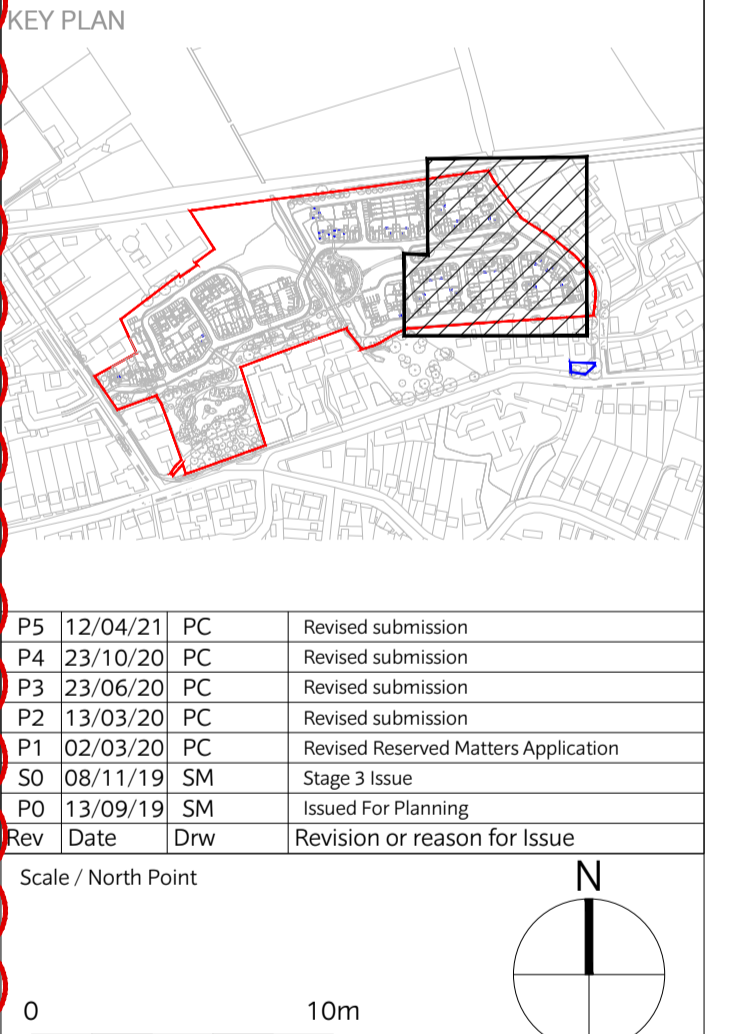
Number	Abbreviation	Species	Density	Pot Size	Height
94-	HEBMW	Hebe 'Mrs Winder'	3/m²	5L	40-60cm
116-	CAMO	Carex morrowii variegata	4/m²	5L	
88-	LIMUMW	Liriope muscari 'Monroe White'	3/m²	5L	
88-	Luni	Luzula nivea	3/m²	5L	
99-	HBS	Heuchera 'Berry Smoothie'	5/m²	3L	
99-	AFA	Astilbe 'Fanal'	5/m²	3L	
99-	GpS	Geranium phaeum var. phaeum 'Samobor'	5/m²	3L	
75-	HBA	Hosta 'Blue Angel'	4/m²	3L	

This document should not be relied on or used in circumstances other than those for which it was prepared and for which Chris Blandford Associates was commissioned. Chris Blandford Associates accepts no responsibility for this document to any other party other than the person by whom it was commissioned.



**NOTE:**

- For informal play & LEAP planting plans refer to drawing TRF-CBA-1-GF-M2-L-4017
- For overall planting schedule refer to drawing TRF-CBA-1-GF-M2-L-4011



Rev	Date	Drw	Issued For Planning
P5	12/04/21	PC	Revised submission
P4	23/10/20	PC	Revised submission
P3	23/03/20	PC	Revised submission
P2	13/03/20	PC	Revised submission
P1	02/03/20	PC	Revised Reserved Matters Application
SO	08/11/19	SM	Stage 3 Issue
PO	13/09/19	SM	Issued For Planning
Rev	Date	Drw	Revision or reason for Issue

**CHRIS BLANDFORD ASSOCIATES**  
 landscape | environment | heritage  
 The Print Rooms Studio 511 164/180 Union St Waterloo London SE1 0LH  
 +44 (0)20 7089 6480 E mail: cba@cbastudios.com W www.cbastudios.com

Client  
**Castlefield International Limited**

Project Title  
**TEVERSHAM ROAD FULBOURN**

Drawing Series and Title  
**4000 SERIES  
 Planting Plan Sheet 5 of 6**

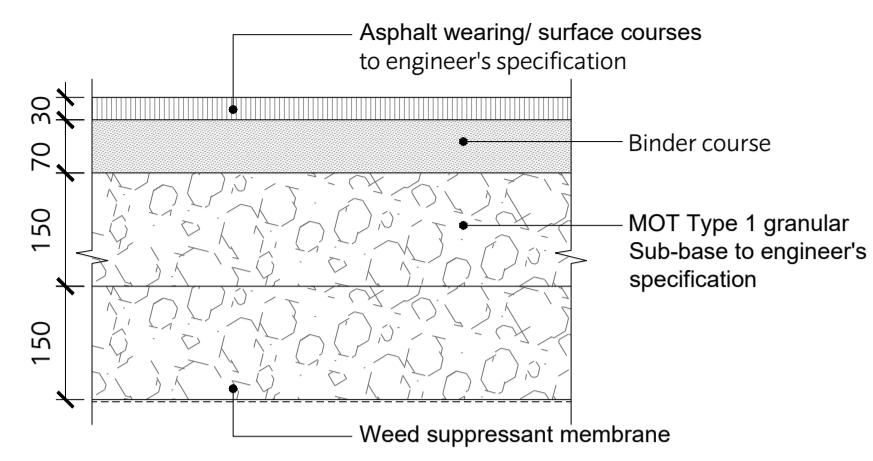
Scale @ A1  
 1:250  
 Drawn  
 SM  
 Date  
 SEP 2019  
 Approved  
 RB  
 FOR PLANNING

Drawing number  
 TRF-CBA-1-GF-M2-L-4016  
 Revision  
 P5

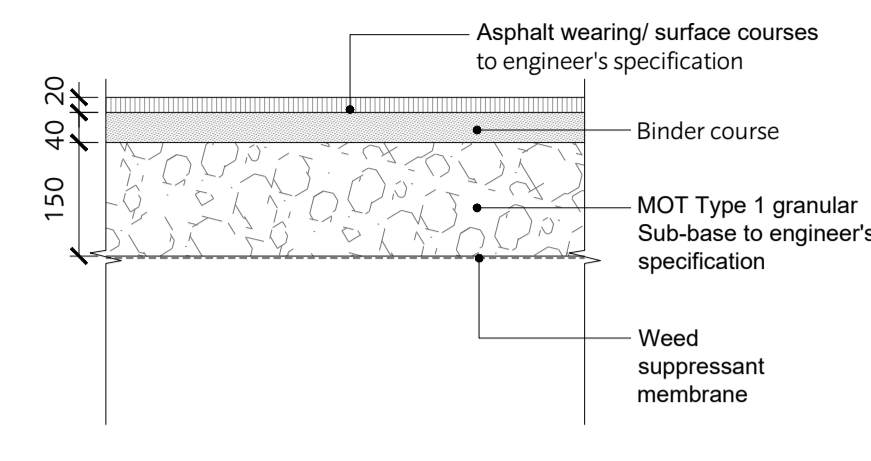




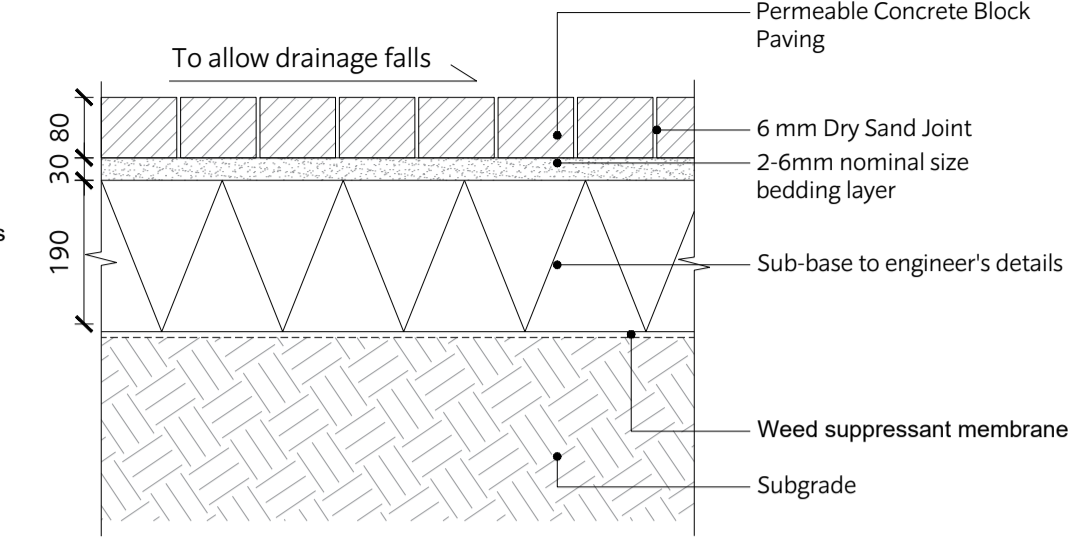




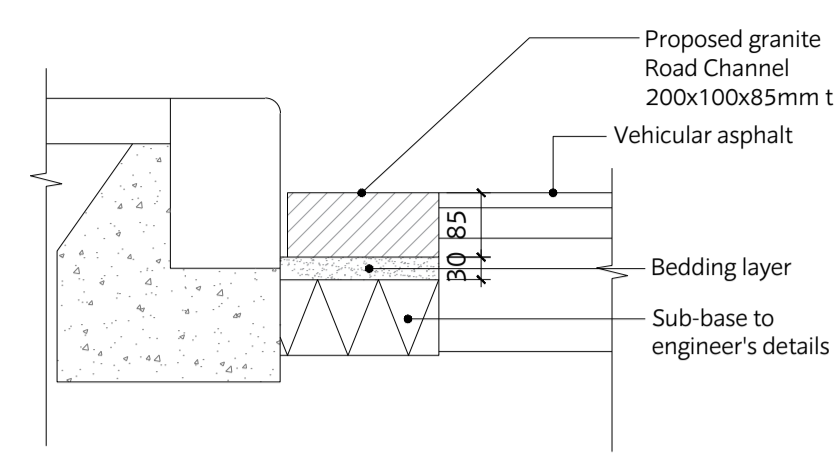
1 Vehicular Asphalt  
Scale: 1:10



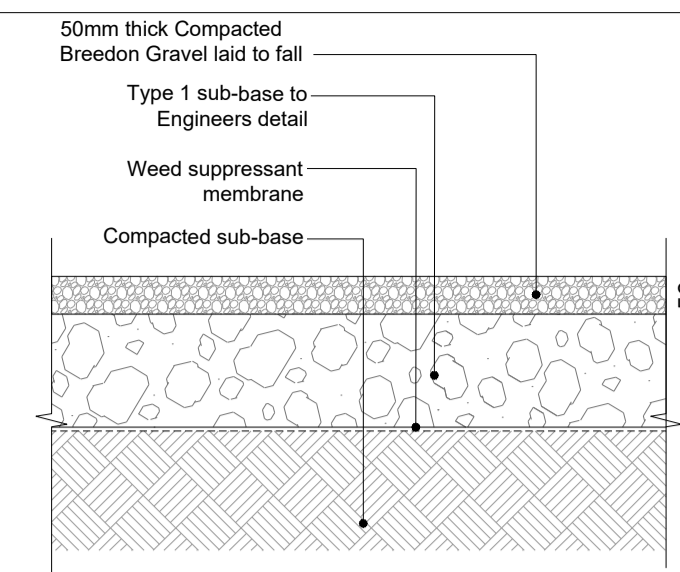
2 Pedestrian Asphalt  
Scale: 1:10



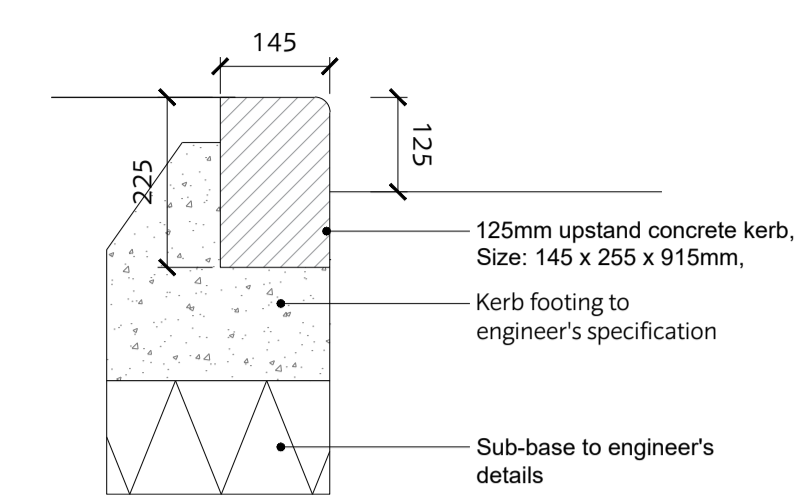
3 CONCRETE BLOCK PAVING  
Scale: 1:10



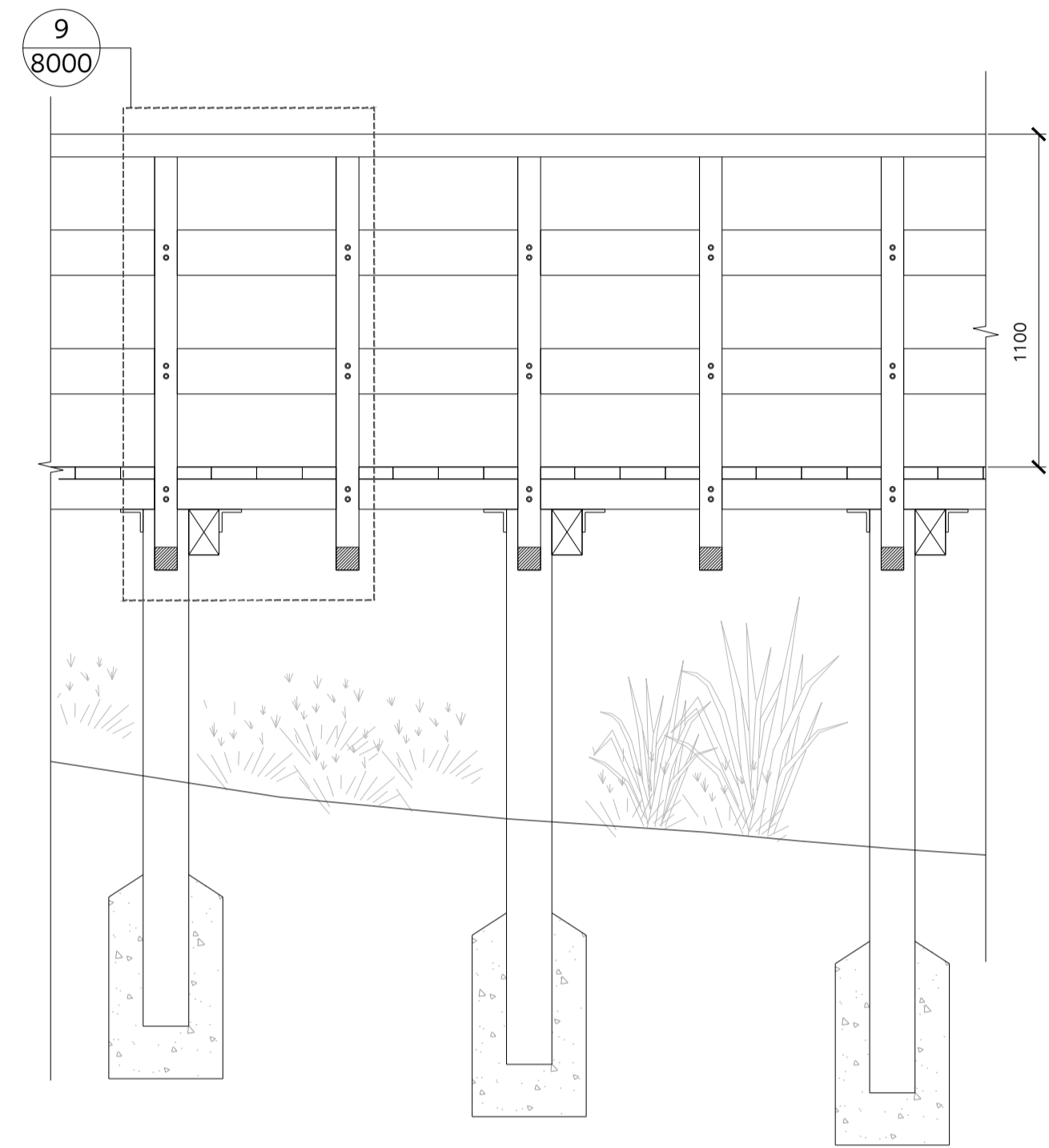
4 Road Channel Detail  
Scale: 1:10



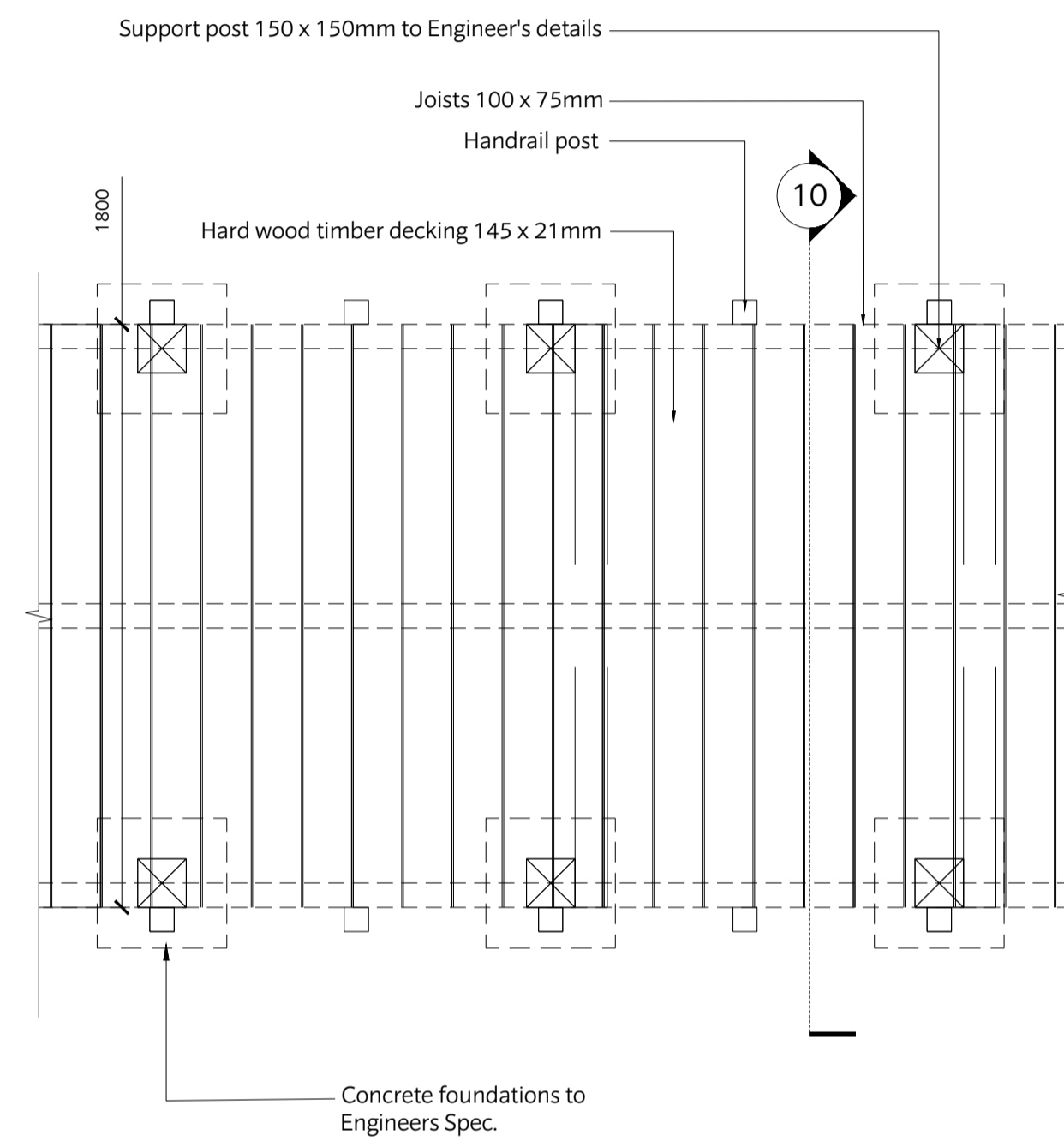
5 Bredon Gravel  
Scale: 1:10



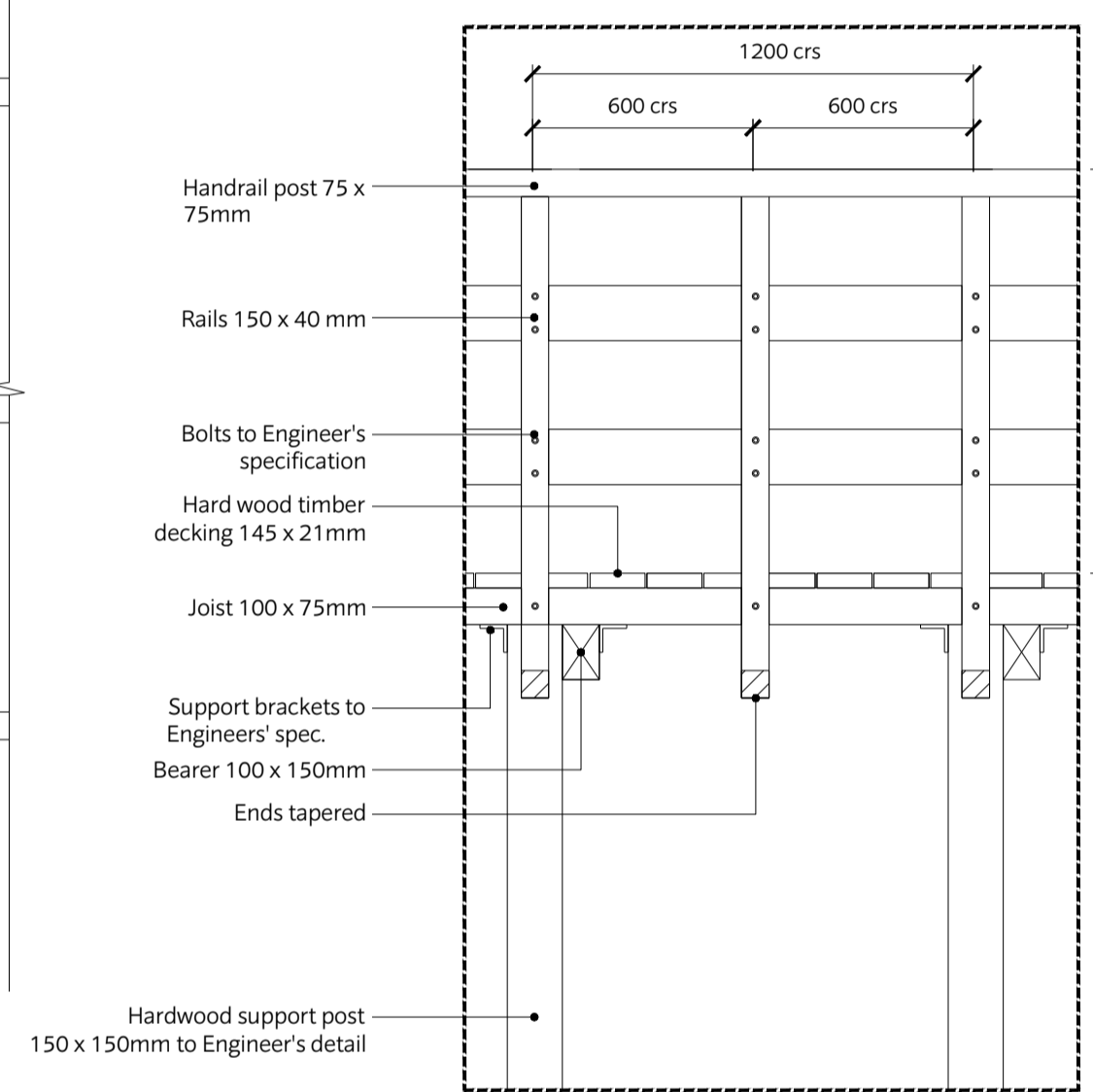
6 Precast Concrete Kerb  
TO FRONT OF FOOTPATH  
Scale: 1:10



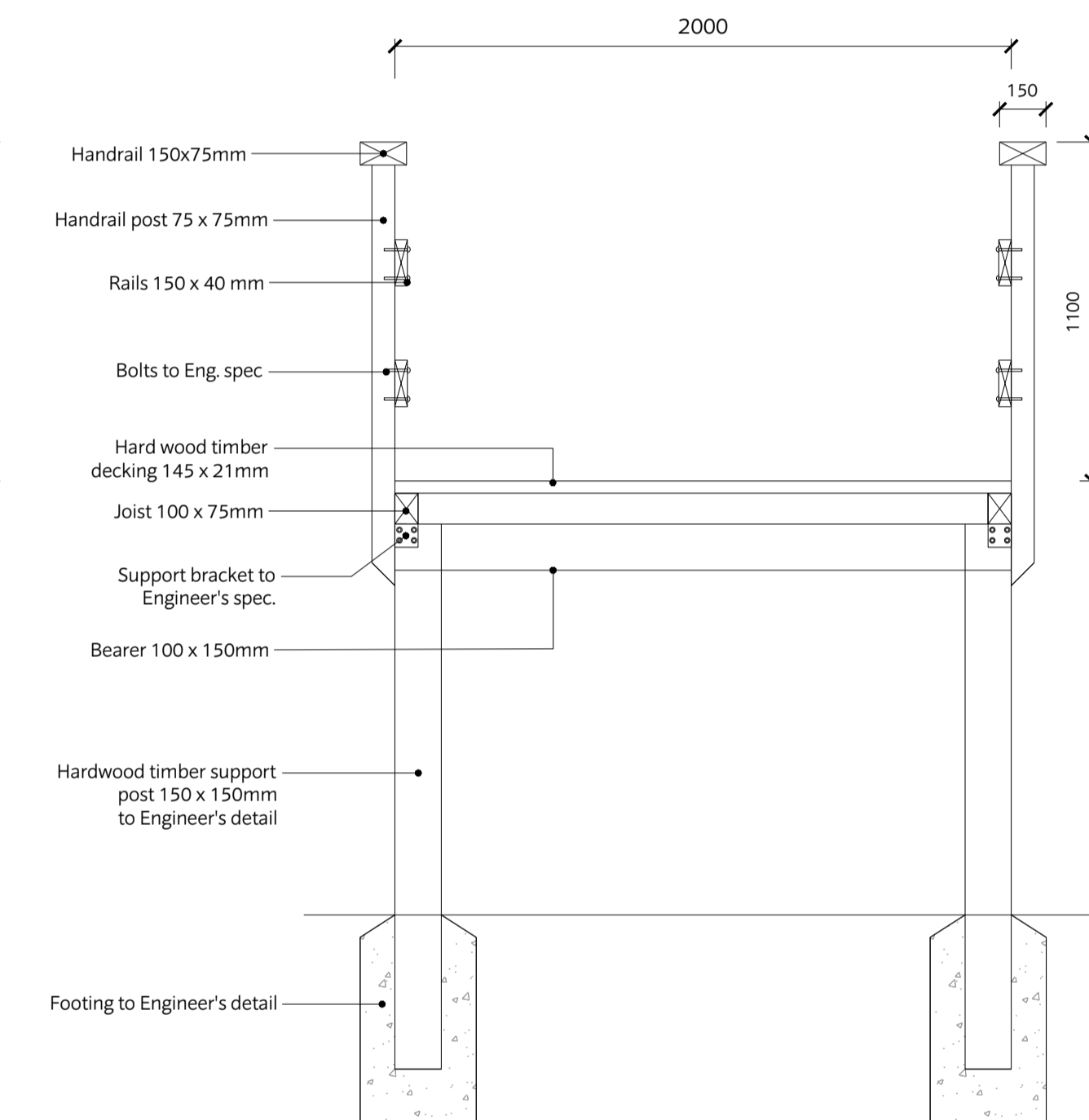
7 ELEVATION RAISED BOARDWALK  
Scale: 1:20



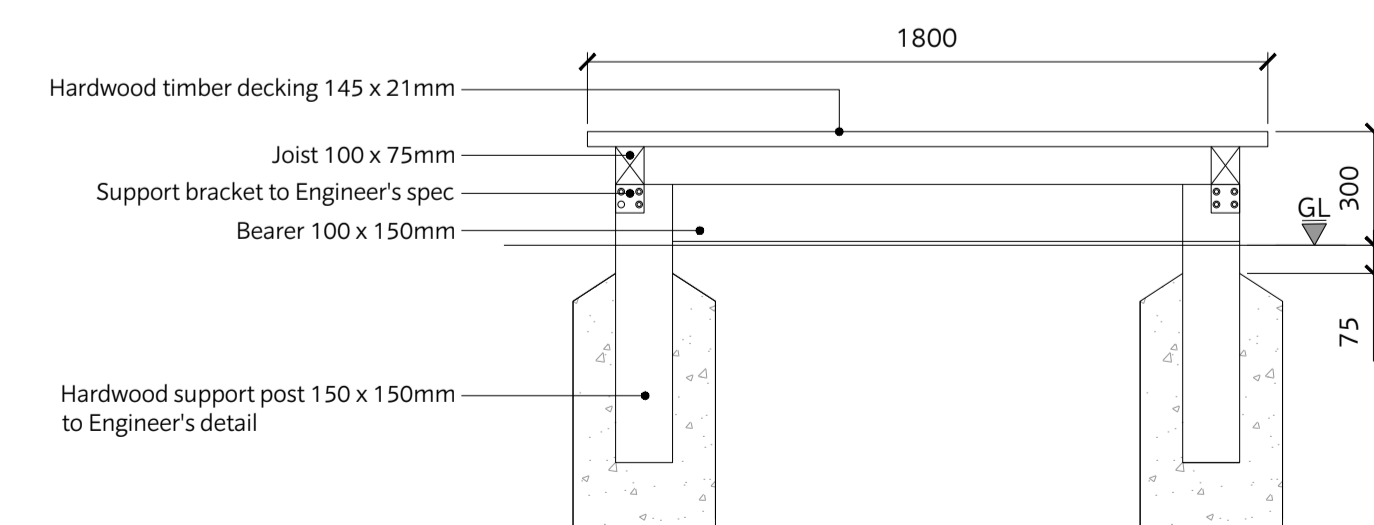
8 PLAN BOARDWALK  
Scale: 1:20



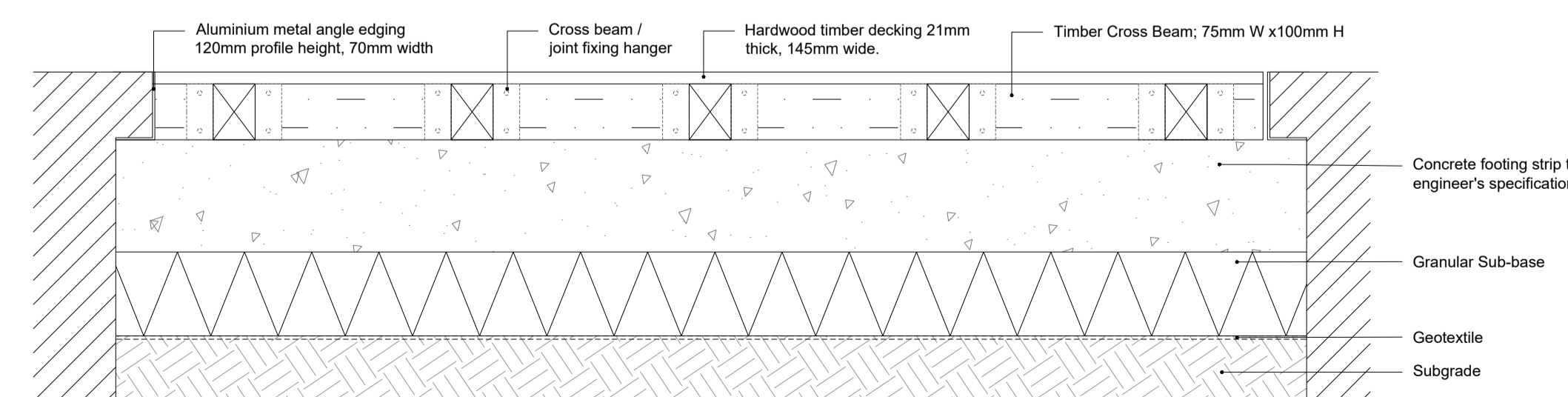
9 TYPICAL BOARDWALK & FOOTBRIDGE RAILING DETAIL  
Scale: 1:20



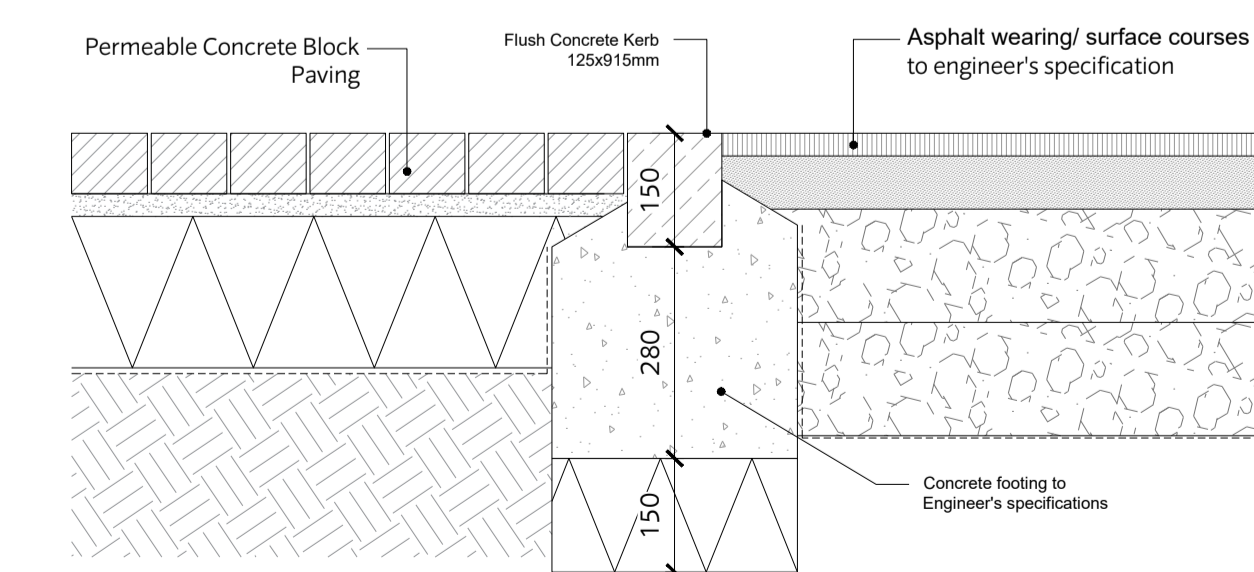
10 TYPICAL BOARDWALK & FOOTBRIDGE SECTION  
Scale: 1:20



11 TYPICAL BOARDWALK SECTION - LOW LEVEL  
Scale: 1:20



12 TYPICAL COMPOSITE TIMBER DECKING  
Scale: 1:10



13 INTERFACE DETAIL/ FLUSH KERB DETAIL  
Scale: 1:10

This document should not be relied on or used in circumstances other than those for which it was prepared and for which Chris Blandford Associates was commissioned. Chris Blandford Associates accepts no responsibility for this document to any other party other than the person by whom it was commissioned.

P3	10/06/20	PC	Revised Reserved Matters Application
P2	28/02/20	PK	Revised Reserved Matters Application
SO	08/11/19	MA	Stage 3 Issue
P1	06/09/19	SM	Issued For Planning
PO	23/08/19	WZ	Issued For Planning
Rev	Date	Drw	Revision or reason for Issue

**CHRIS BLANDFORD ASSOCIATES**  
landscape | environment | heritage  
The Print Rooms Studio 511 164/180 Union St Waterloo London SE1 0LH  
T +44 (0)20 7089 6480 E mail@cbastudios.com W www.cbastudios.com

Client  
**Castlefield International Limited**

Project Title  
**TEVERSHAM ROAD FULBOURN**

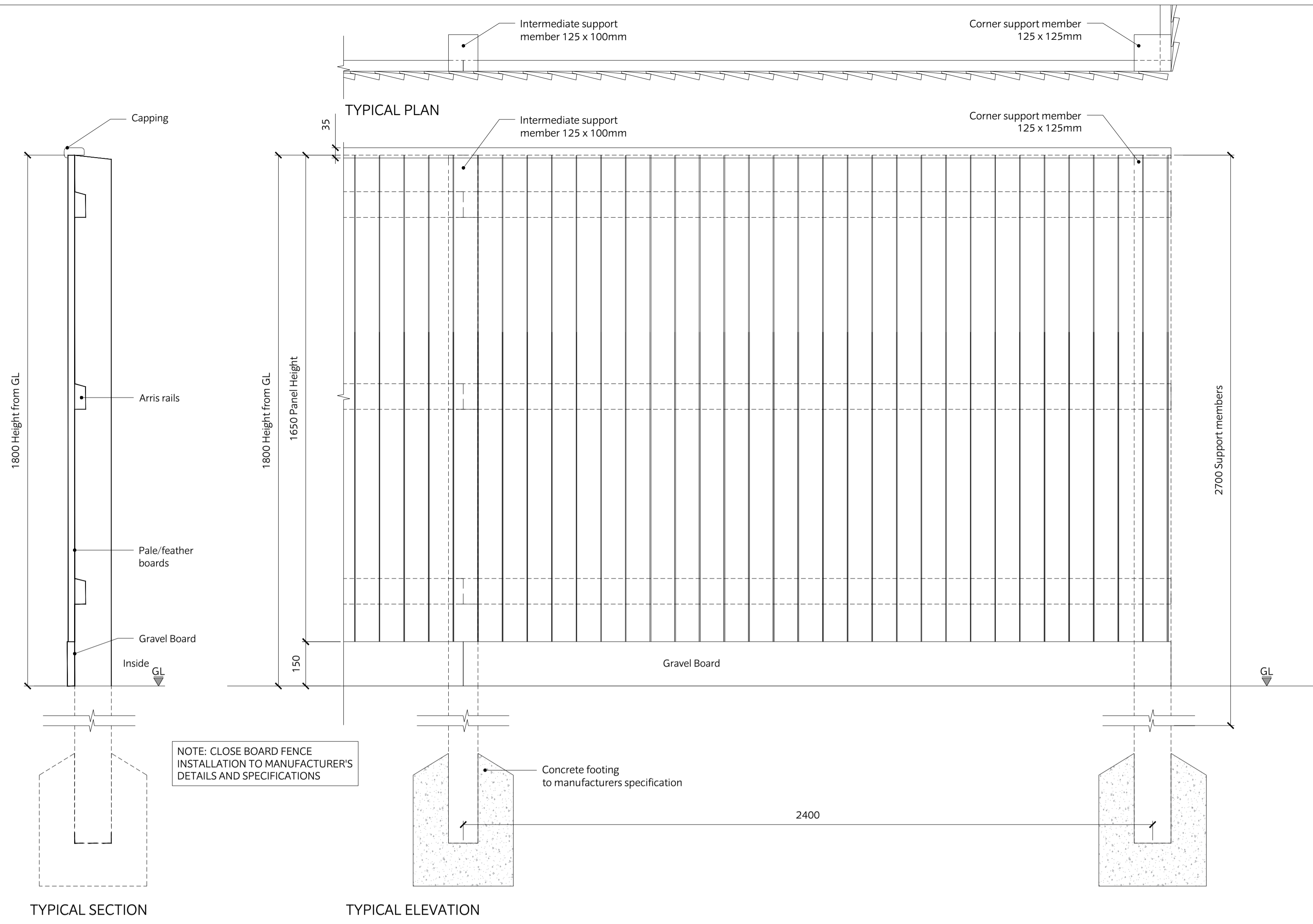
Drawing Series and Title  
**8000 SERIES  
Hard Landscape Outline Details**

Scale @ A1  
AS SHOWN  
Drawn  
PC  
Approved  
AS  
Date  
AUG 2019  
Drawing Status  
FOR PLANNING

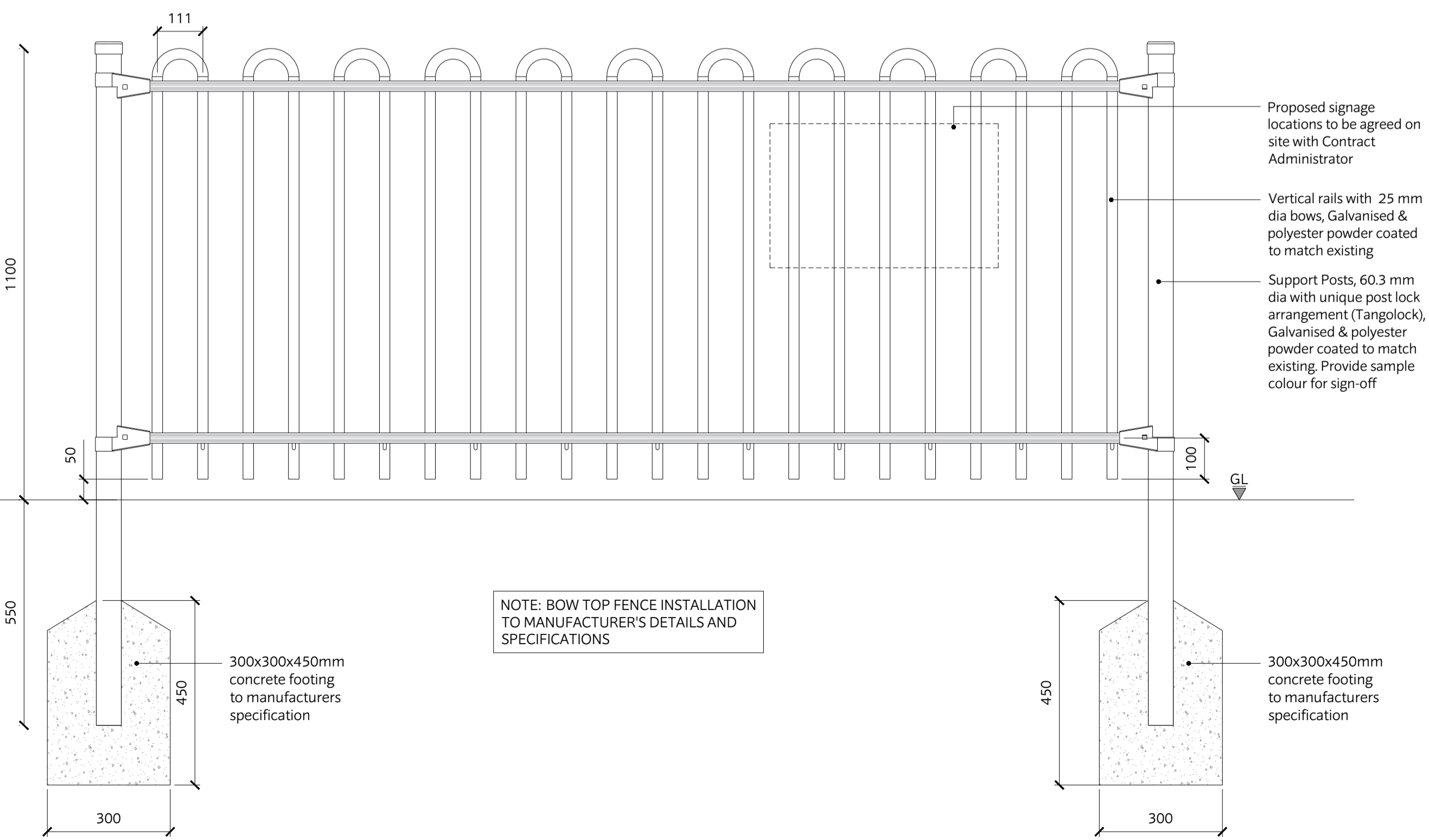
Drawing number  
TRF-CBA-1-GF-M2-L-8000  
Revision  
P3



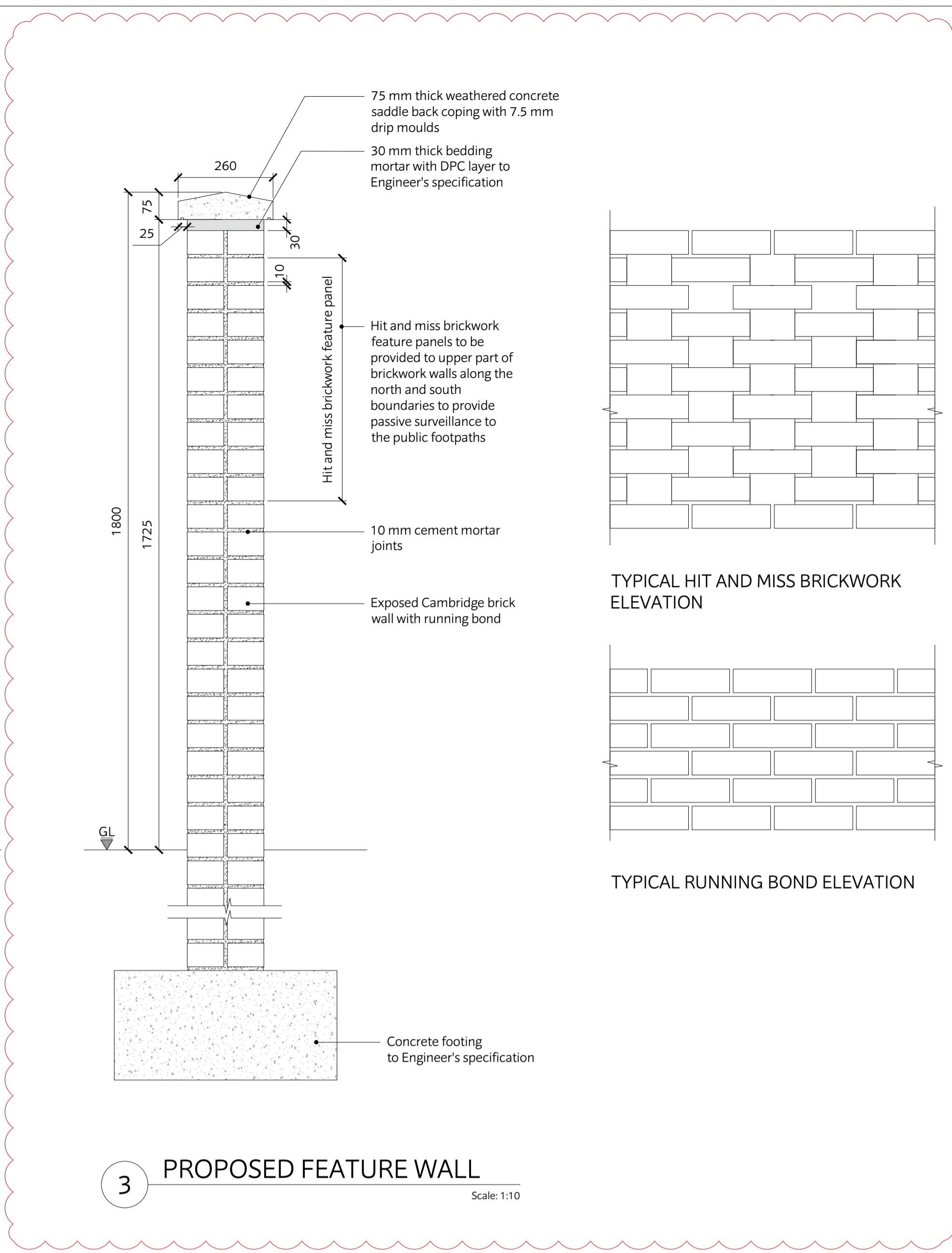
This document should not be relied on or used in circumstances other than those for which it was prepared and for which Chris Blandford Associates was commissioned. Chris Blandford Associates accepts no responsibility for this document to any other party other than the person by whom it was commissioned.



**1 PROPOSED FENCE TYPE 1**  
FENCE BETWEEN HOUSES  
Scale: 1:10



**2 PROPOSED FENCE TYPE 2**  
FENCE FOR PLAY AREA  
Scale: 1:10



**3 PROPOSED FEATURE WALL**  
Scale: 1:10

Rev	Date	Drw	PK	Revision or reason for Issue
P2	10/06/20	AS		Planning
PO	28/02/20	PK		Revised Reserved Matters Application

**CHRIS BLANDFORD ASSOCIATES**  
cba landscape | environment | heritage  
The Print Rooms Studio 511 164/180 Union St Waterloo London SE1 0LH  
T +44 (0)20 7089 6480 E mail@cbastudios.com W www.cbastudios.com

Client  
**Castlefield International Limited**

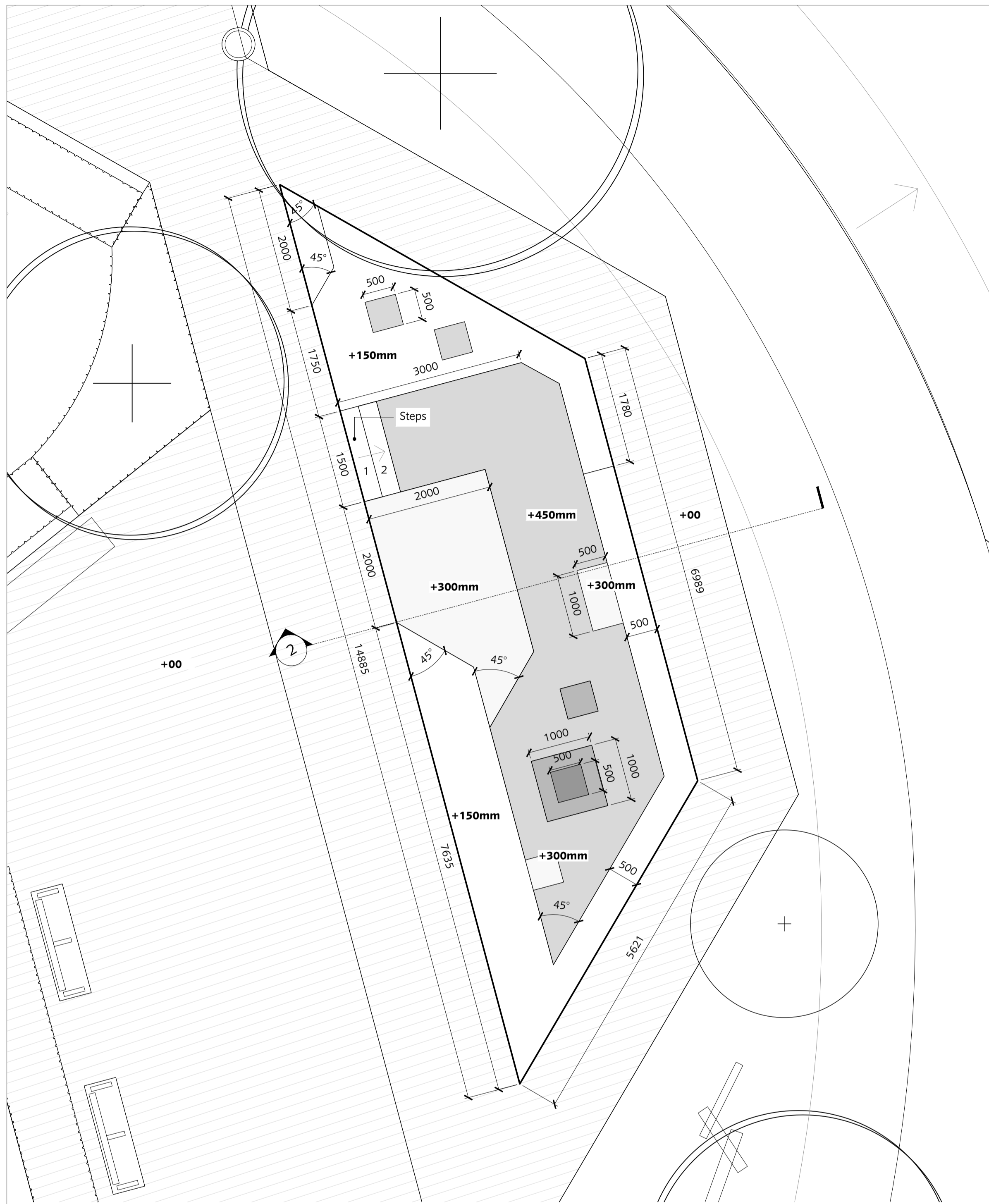
Project Title  
**TEVERSHAM ROAD FULBOURN**

Drawing Series and Title  
**8000 SERIES**  
Hard Landscape Outline Details  
Boundary Treatments

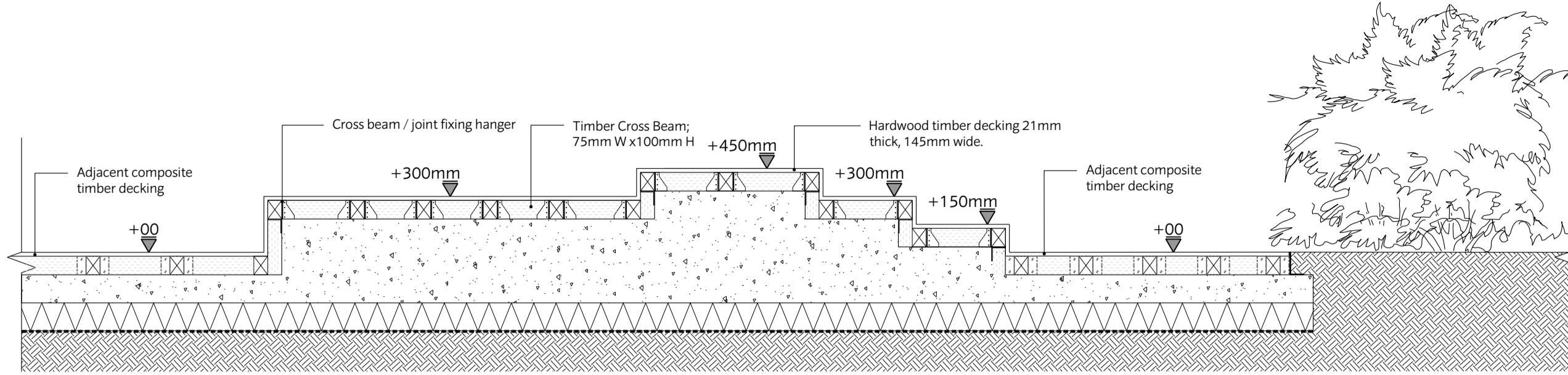
Scale @ A1  
AS SHOWN  
Drawn  
PK  
Approved  
AS  
Date  
FEB 2020  
Drawing Status  
FOR PLANNING

Drawing number  
TRF-CBA-1-GF-M2-L-8001  
Revision  
P2





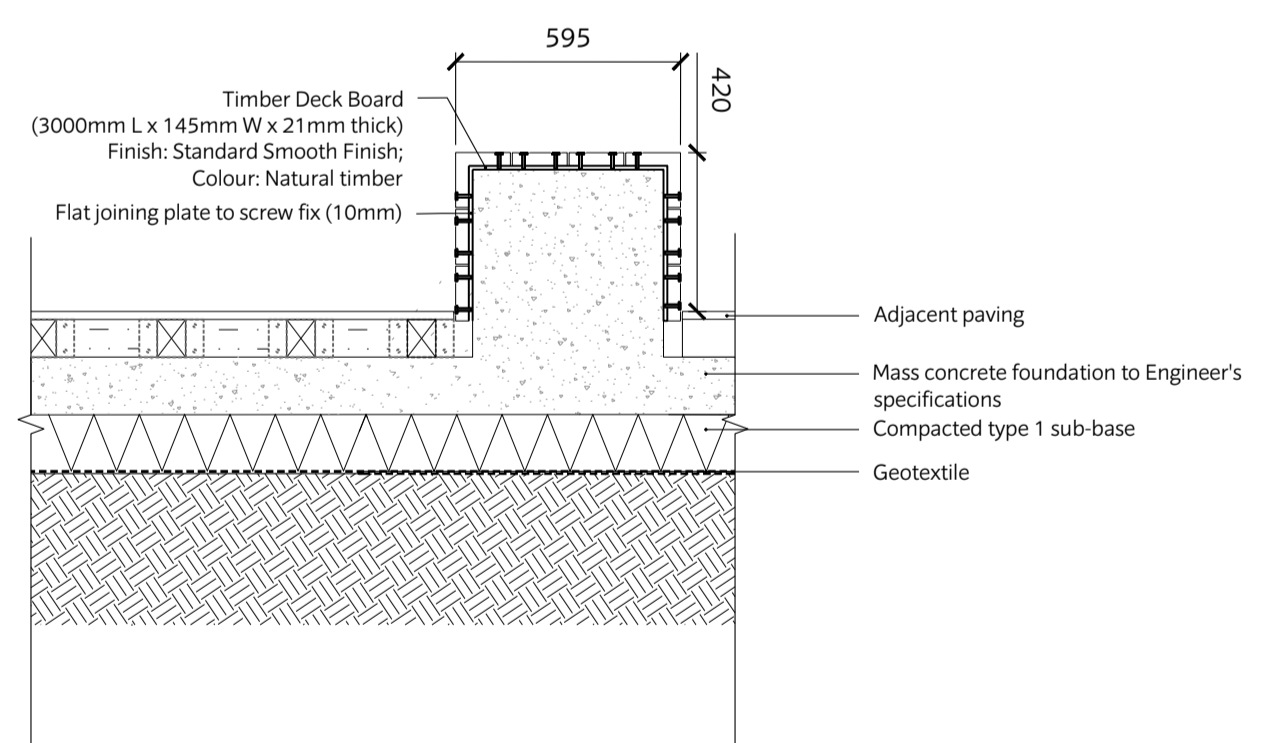
**1** Bespoke Play Feature Plan  
Scale: 1:50



**2** Bespoke Play Feature Section  
Scale: 1:25



**3** Bespoke Play Feature - Reference Image



**4** Bespoke Bench  
Scale: 1:20

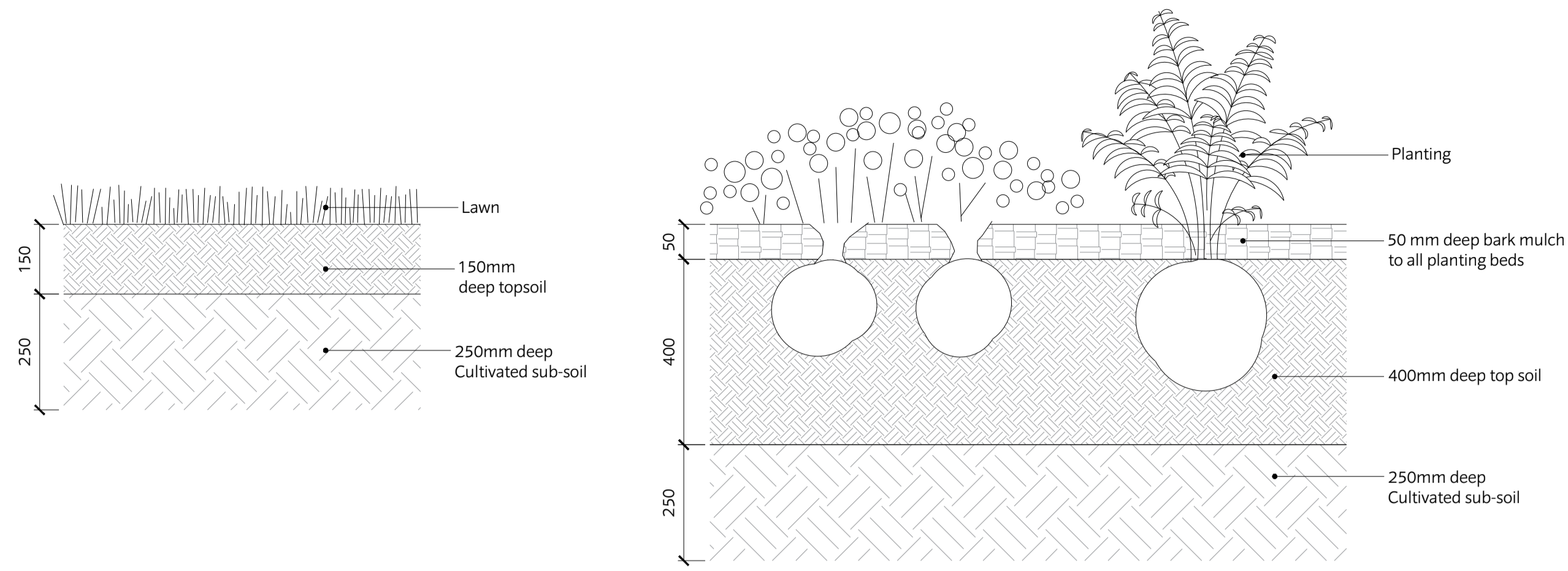
P2	12/11/20	AS	Revised submission Levels.
P1	28/02/20	PM	Revised Reserved Matters Application
SO	08/11/19	MA	Stage 3 Issue
Rev	Date	Drw	Revision or reason for Issue

**CHRIS BLANDFORD ASSOCIATES**  
 landscape | environment | heritage  
 The Print Rooms Studio 511 164/180 Union St Waterloo London SE1 0LH  
 T +44 (0)20 7089 6480 E mail@cbastudios.com W www.cbastudios.com

Client	Castlefield International Limited
Project Title	TEVERSHAM ROAD FULBOURN
Drawing Series and Title	8000 SERIES Play Feature
Scale @ A1	AS SHOWN
Drawn	MA
Approved	RB
Date	AUG 2019
Drawing Status	FOR PLANNING
Drawing number	TRF-CBA-1-GF-M2-L-8300
Revision	P2

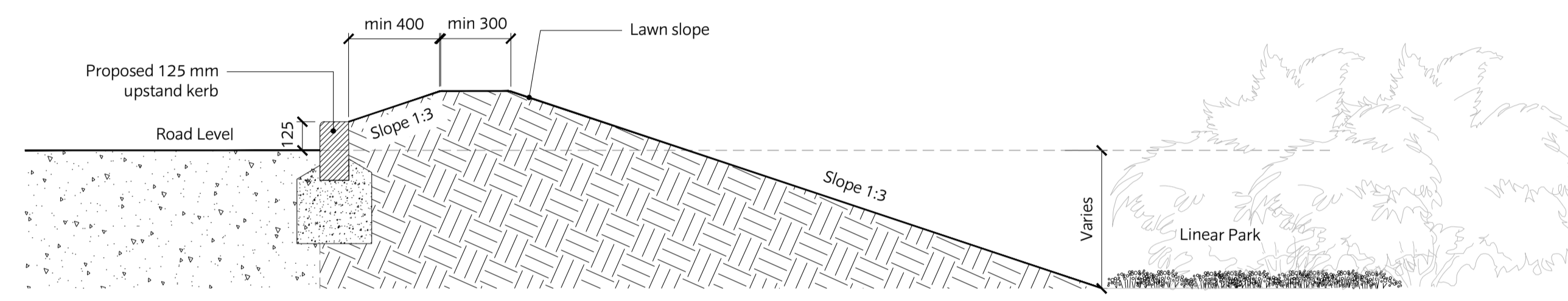


This document should not be relied on or used in circumstances other than those for which it was prepared and for which Chris Blandford Associates was commissioned. Chris Blandford Associates accepts no responsibility for this document to any other party other than the person by whom it was commissioned.

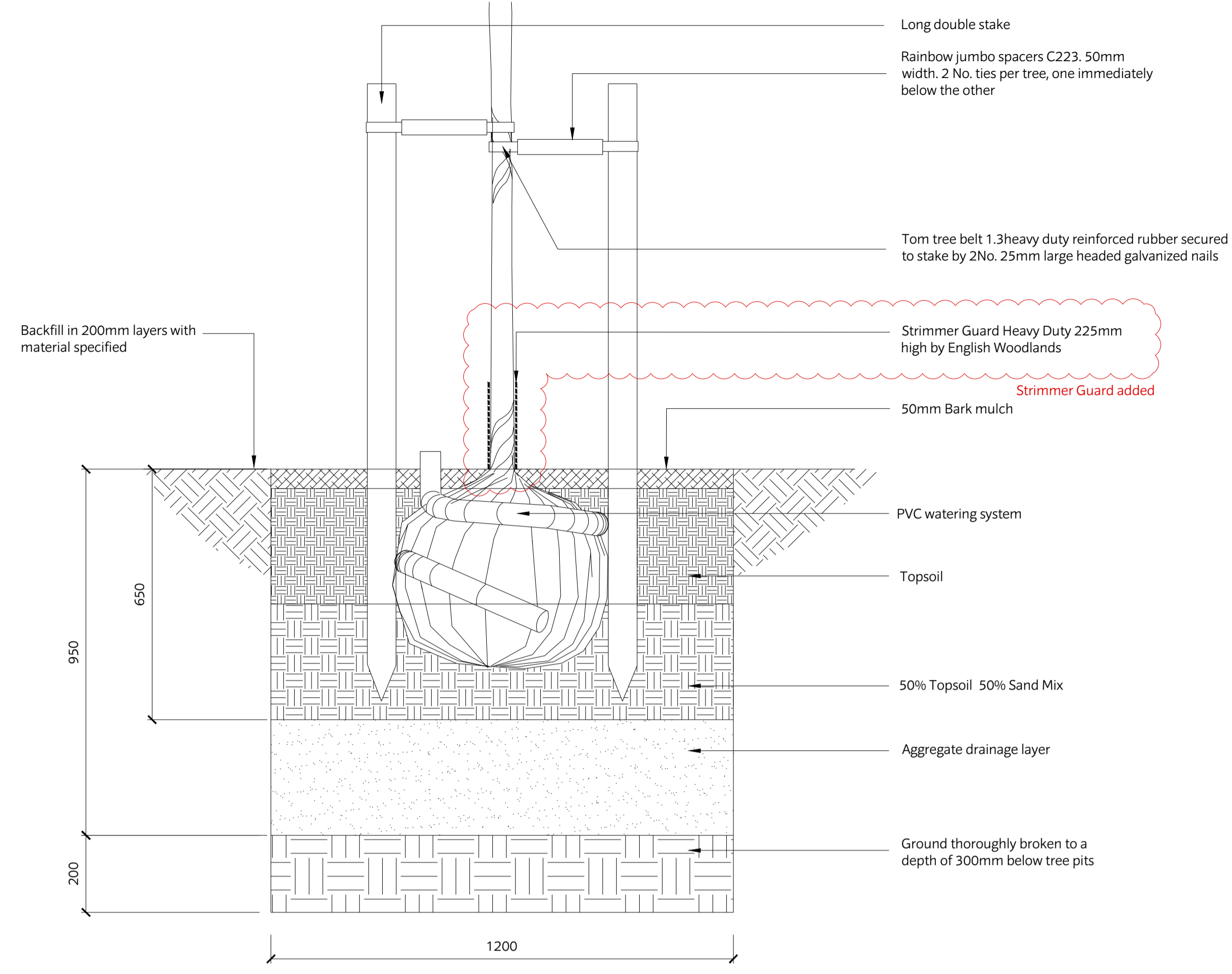


1 PLANTING SOIL - LAWN  
Scale: 1:10

2 PLANTING SOIL - SHRUBS / HEDGES  
Scale: 1:10



4 LANDSCAPE GRADING BETWEEN ROAD & LANDSCAPE  
Scale: 1:20

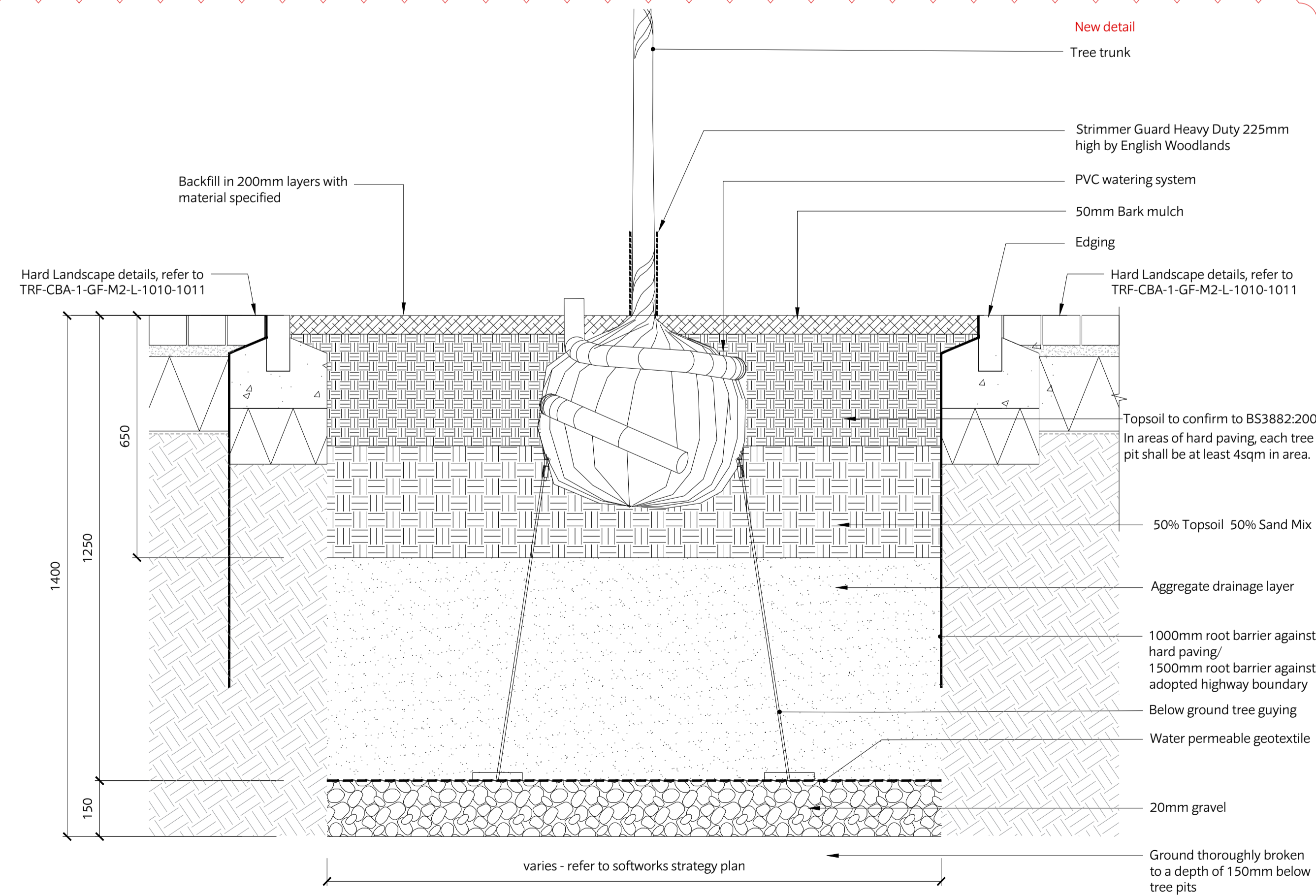


3 TREE PIT - SOFT LANDSCAPE  
Scale: 1:10

Notes added

TREE PLANTING NOTES:

- 1) All trees shall be of reasonable size and shape and in healthy condition. Trees shall comply with the relevant requirements specified in BS3936.
- 2) Preparations for tree planting must be made before trees are delivered to site and planting shall be carried out immediately after trees reach the site. All damaged roots and branches shall be pruned. Before planting all protection must be afforded to trees from wind, drought and other drying or damaging conditions.
- 3) Tree planting shall be undertaken in favourable conditions during the November to March season. Plants with dry roots will be rejected.
- 4) Tree pits shall be excavated to suitable dimensions to accommodate roots or rootballs and in any instance shall not be less than typical details shown on this drawing. Any unsuitable excavated material including subsoil, clay and bedrock shall be removed to an approved tip. Bases of tree pits shall be forked to 150mm depth.
- 5) Before planting stakes shall be driven vertically into the ground to a depth of 600mm below the bases of the tree pit. Stakes shall be of larch or pine and shall be peeled and pointed, 1 No. per tree. They shall be 1750mm in length, with a nominal diameter of 75mm and 1/3rd tree stem height above ground level.
- 6) Stems of trees shall be close to but not touching stakes and shall be protected with strimmer guard. Trees shall be secured by 1 No. standard buckle tie and spacer pad, which shall be pinned and secured close to the top of the stake.
- 8) Allowance shall be made for the removal of labels, nursery ties and markers from the trees.
- 9) Immediately after planting operations are complete, the contractor shall supply and spread, to an even depth of 50mm, a 1000mm diameter area of woodchip for each planting station. The woodchip will be 15-100mm nominal size, with no dust and fines, and will be 80% woodchip and 20% bark and shall be flush with existing ground level.
- 10) An area 1000mm diameter is to be maintained weed free at all times around each tree. No strimmers are to be used within the woodchip area. After planting, all trees shall be thoroughly watered.
- 11) Trees shall be watered during the first growing season as required to ensure healthy establishment.
- 12) Trees shall be checked following strong winds and adjusted as required.



5 TREE PIT - HARD LANDSCAPE  
Scale: 1:10

P3	10/06/20	PC	Revised Reserved Matters Application
P2	28/02/20	MA	Revised Reserved Matters Application
SO	08/11/19	MA	Stage 3 Issue
P1	06/09/19	SM	Issued For Planning
PO	23/08/19	WZ	Issued For Planning
Rev	Date	Drw	Revision or reason for Issue

**CHRIS BLANDFORD ASSOCIATES**  
landscape | environment | heritage  
The Print Rooms Studio 511 164/180 Union St Waterloo London SE1 0LH  
T +44 (0)20 7089 6480 E mail@cbastudios.com W www.cbastudios.com

Client  
**Castlefield International Limited**

Project Title  
**TEVERSHAM ROAD FULBOURN**

Drawing Series and Title  
**8000 SERIES  
Soft Landscape Outline Details**

Scale @ A1  
AS SHOWN  
Drawn  
PC  
Approved  
AS  
Date  
AUG 2019  
Drawing Status  
FOR PLANNING

Drawing number  
TRF-CBA-1-GF-M2-L-8500  
Revision  
P3